



CONTINUUM<sup>®</sup>

---

SOLUTIONS

## Reimbursement Disclaimer

*Information related to HCPCS or ICD-10 Codes for use in determining the proper Medicare or Medicaid reimbursement status for any DeRoyal® product listed in this catalog, represents the best efforts of DeRoyal Industries, Inc. in determining relevant HCPCS Codes and corresponding diagnoses for certain of DeRoyal's products. This information is provided as a no-cost service to customers of DeRoyal. The information is compiled from the descriptors and functions associated with the HCPCS and a review of ICD-10 Codes from publicly available information and anecdotal information obtained from sources familiar with the billing process as indicated above. However, only the appropriate Medicare authority can ultimately determine the appropriateness of reimbursement of a particular product, for a particular patient, given the appropriate diagnosis. DeRoyal strongly cautions the users of this information to verify the applicability of a given HCPCS and/or ICD-10 Codes in a particular situation prior to seeking reimbursement for any DeRoyal® product.*



Since 1973, DeRoyal Industries, Inc. has been committed to improving the clinical quality and economic health of its customers.

**Contact us at:**

[customerservice@deroyal.com](mailto:customerservice@deroyal.com)

or

800.251.9864





## Continuum® Solutions Value and Benefits

Introduction to Continuum® .....	8
Acute and Surgical Supply Solutions .....	10
Discharge Solutions .....	12
Outpatient and Non-Acute Facility Solutions .....	14

## Continuum® Systems and Technology Overview

VaultEX Cabinet .....	18
Vault Closet .....	19
VaultEX NPWT (Negative Pressure Wound Therapy) .....	20
Continuum® SPINE .....	21
AIR™ Handheld Scanner .....	22
OSCAR® Smart Recptacle .....	23

## Orthopedics and Bracing Continuum® Products

Cervical and Spine .....	26
Shoulder, Arm, Elbow .....	37
Wrist, Hand, Thumb and Finger .....	45
Knee and Leg .....	52
Foot and Ankle .....	60
Temp Therapy .....	71
Miscellaneous .....	73

## Negative Pressure Wound Therapy (NPWT) Products

Pumps .....	78
Kits and Accessories .....	79





**CONTINUUM<sup>®</sup>**

**Value  
and  
Benefits**

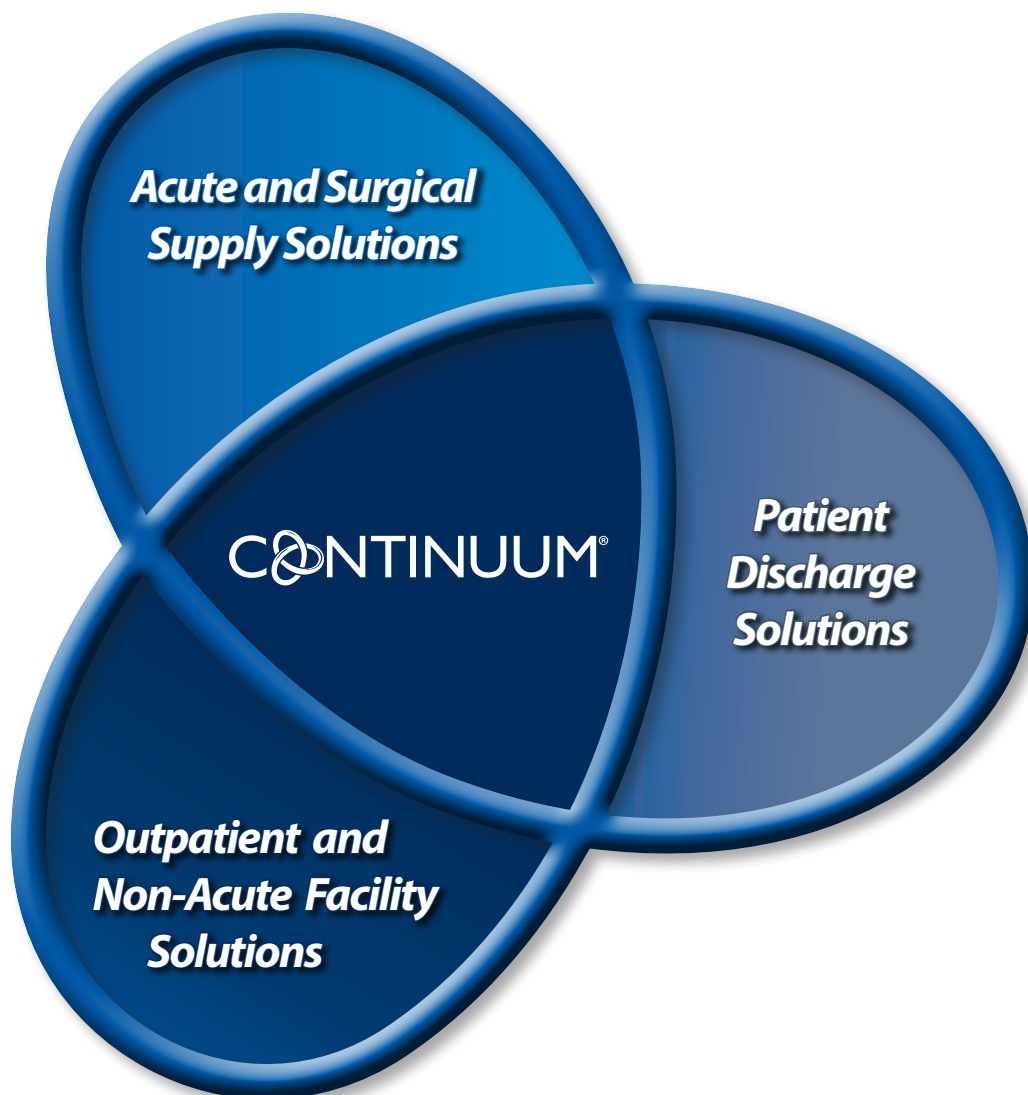
# Introduction to Continuum<sup>®</sup> Solutions

GRE

Healthcare technology plays a critical role in addressing the challenge to provide quality care in a sustainable and affordable manner. Every day, hospitals and health systems are faced with multiple challenges, including:

- Discharge delays
- Excessive inventory
- Expired products
- Inefficient charge capture and billing
- Offsite device storage
- Product recalls

DeRoyal's Continuum<sup>®</sup> Solutions is a patented technology composed of interconnected software and hardware systems within a facility's information platform ecosystem. It is designed to add intelligence and efficiency through product tracking, charge capture, workflow, and billing optimization across a single facility or the collective Integrated Delivery Network (IDN) value chains. The Continuum<sup>®</sup> System provides customers a variety of solution options:





# Introduction to Continuum® Solutions

up

DeRoyal's Continuum® technology provides facilities with a patented digital chain of custody and product tracking that improves billing outcomes, reduces out of stocks, and creates valuable operations data all while relieving clinical staff of burdensome manual processes.

## Software / Cloud Base Systems

Continuum solutions are powered by local and cloud-based software, enabling the communication of data across a facility's Information Technology (IT) ecosystem. Through established Electronic Medical Record (EMR) integration across all major vendors, the system imparts seamless patient product assignment and the Centers for Medicare and Medicaid Services (CMS) required documentation collection. The Continuum System offers robust reporting features, accountability tracing, and business analytic tools to measure performance and results. In addition, Continuum technology can also be utilized to maximize workflow, and reduce the burden of discharge processes and paperwork for your clinical staff while providing accurate consumption data.

## Hardware and Tracking Technology

The Continuum System deploys innovative technologies in inventory storage locations and at the point of use (i.e., Radio Frequency Identification (RFID), Global Positioning System (GPS) tracking systems, visualization technologies, etc.). This user-friendly and intuitive system continuously monitors inventory levels and tracks usage with a 99.8%\* accurate charge capture. From product chain of custody to cost and expiration information, these technologies capture a variety of benefits across the product's clinical life cycle and care settings.



## Implementation

Beyond the technology, the DeRoyal® Continuum implementation team is dedicated to delivering the professional expertise and support necessary to integrate the solution seamlessly into the customer's current workflow. The process typically takes 6-8 weeks and includes:

**Value Assessing:** Site assessment to understand facility needs and the potential site-specific benefits of Continuum solutions (savings assessments, inventory management optimization, etc.)

**Project Planning:** A dedicated Continuum project management team will align all the necessary facility stakeholders and drive preparations leading to the system "Go Live"

**Activation and Training:** Installation of The Continuum System, providing training and support at system launch and provide follow-up support as needed through on-site sessions and support tools.

## Service and Support

Continuum support services do not end at installation. DeRoyal will schedule routine meetings with our local representative to maximize the value of the Continuum generated business reports. The representative will help analyze inventory and consumption information to optimize revenue capture and control costs. For any problems or inquiries, our Continuum Customer Support team is available during business hours, and has an after-hours support line for critical issues.

\*data on file

## Continuum<sup>®</sup> Acute & Surgical Supply Solutions

Hospitals and surgical centers are challenged with providing excellent clinical care while delivering efficient and fiscally sustainable services. The standard state of supply chain operations requires clinicians to perform manual, time-consuming activities that are inherently inefficient, increase costs, and take time away from direct patient care.

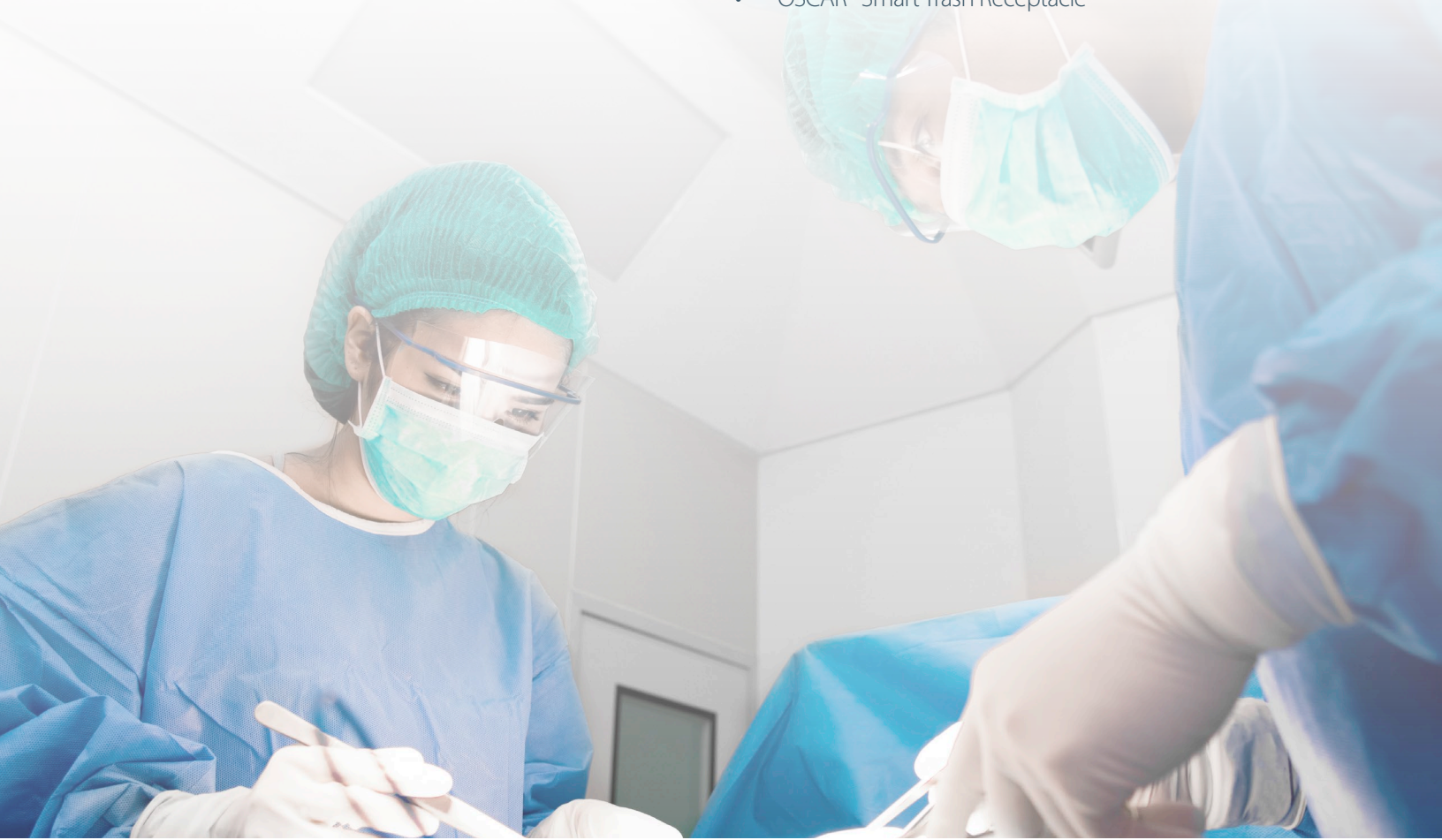
DeRoyal's Continuum Acute & Surgical Supply Solutions combine inventory management and point of use data. This unique solution reduces reliance on manual data entry and enhances staff and facility operational proficiency. The Continuum system interfaces with EMRs and other software systems to eliminate electronic reporting void and deliver cloud-based operational data. The system imparts accuracy and visibility to all aspects of the supply chain through an easy-to-use platform. As such, health systems can increase revenue, make informed business decisions, and allow clinicians to focus exclusively on patient care.

### Applicable Environments:

- Operating Suites
- Acute Care Supply
- Ambulatory Surgical Centers

### Available Systems:

- AIR Inventory Management System
- Negative Pressure Wound Therapy Inventory Management System
- OSCAR<sup>®</sup> Smart Trash Receptacle



# Acute and Surgical Supply Solutions

**AIR**

## Inventory Monitoring made easy with the Continuum AIR System



**0** Expired Products with Inventory Tracking\*



**80%** Cut Inventory Management Time for Clinician\*

The Continuum AIR system includes a portable RFID scanning device, working in tandem with Continuum's mobile app to simplify inventory management in any inventory area or location. The Continuum AIR system automates manual inventory activities such as counts, expiration checks, counting, checking expiration dates, and locating items affected by a recall. Continuum AIR system quickly counts and reports RFID-tagged items as they are stored in the hospital's or surgery center's inventory. The Continuum cloud-based application allows visibility into inventory status by alerting to impending product expiration dates of products and by signaling for opportunities to reduce on-hand quantities. The Continuum AIR platform's ability to provide visibility and traceability into the supply chain also enables detailed analytics for improved operation.



1

**OSCAR**

## Add Intelligence to the OR with OSCAR® Smart Receptacle



**8+** Minute/Case Reduction in Clinical Documentation Time\*



**+\$10,000** Savings Attributed to Usage Visibility\*

The Continuum OSCAR receptacle is a smart trash receptacle used in procedure areas for simplified, accurate supply capture at the point of use. Radio Frequency Identification (RFID) technology enables the OSCAR receptacle to automatically capture and report supply usage, case costs, and Unique Device Identification (UDI) details with minimal clinician effort. Clinicians simply **Pick it. Use It. Throw it away.**® This platform enables clinicians to focus on patient care and achieve 99.8%\* usage capture accuracy.



2

**NPWT**

## Transparent Tracking with Continuum Negative Pressure Wound Therapy



**2611** Days Accurately Tracked Rental Days Over 6 Mo.\*



**\$36,000** Annual Capital Equipment Recovery\*

Leveraging RFID, GPS, and cloud-based software and systems, The Continuum System is designed to work in tandem with healthcare systems, insurance providers, and standalone facilities to provide unparalleled levels of automation and precision to the world of NPWT. Through the integrated digital chain of custody and device tracking, the system will provide clear daily billing and even help recover lost equipment. This level of information technology enables facilities to increase efficiency, better manage costs, and establish complete visibility for the facility's supply chain.



3

\*Follow QR codes studies and data

## Continuum<sup>®</sup> Discharge Solutions

The Continuum Real Time Inventory Management System by DeRoyal facilitates seamless transition of patients from hospital to home. Drastically simplified and automated billing coupled with an inventory management system allows for patients to carry durable medical equipment out the door. By merging RFID or GPS inventory tracking and EMR integration, The Continuum System keeps real time inventory counts while ensuring proper charge capture and avoiding costly inventory losses.

### Applicable Environments:

- Durable Medical Equipment (Medicare Part B) Providers
- Emergency Departments
- Acute Care Discharge

### Available Systems:

- Vault/VaultEX Inventory Management System
- Air Inventory Management System
- Negative Pressure Wound Therapy Inventory Management System
- SPINE Management System



# Discharge Solutions

**DS**

## Revenue Capture and Cost Avoidance with Continuum® Real-time Inventory and Charge Capture Systems

 **99.6%** Charge Capture Rate\*

 **26%** Reduction in Billing Errors\*

DeRoyal's Continuum Discharge Systems are real time inventory and charge capture solutions designed to offload high dollar inventory in patient discharge areas efficiently and effectively. The system interfaces with your hospital's existing EMR systems, allowing the items to be assigned to patients when dispensed. Clinician burden is reduced through the capture of all required CMS documentation for billing, automated inventory tracking, and PAR level reordering. This information is stored securely in the Continuum Cloud and made available to necessary hospital or DME staff for reporting, restocking, and billing purposes.



4

**NPWT**

 **1.47 Days** Reduction in patient stay\*

 **\$3,361.39** Generated Savings per patient\*

Continuum's automated negative pressure inventory management system utilizes the one patient, one pump principle to deliver optimal outcomes at reduced cost. This allows for secure transfer of electronically encrypted medical information to expedite the insurance approval process from the start of therapy. Patients can then utilize the same device from beginning of treatment to home care, eliminating discharge dressing changes and relearning of a new device's operation. These features enable The Continuum System to facilitate the transition to at-home (Medicare Part B) care at discharge automatically through GPS fencing. The Continuum Solution provides a means for clinicians to get their patients back home without interruption in care and with minimal effort.



5

**SPINE**

## Optimize a Spine Bracing Program with The Continuum Spine Solution

 **14 Hrs** Reduction in patient time to mobilization\*

 **\$2023.40** Per Patient Savings by Spinal Bracing Program\*

Continuum Spine solution serves to deliver further value to the clinical efficiencies in the proven DeRoyal Hospital Spine Bracing Program. The system utilizes VaultEX cabinets to house lumbar-sacral orthoses (LSO) and thoracic-lumbar-sacral orthoses (TLSO) and is equipped with an automated inventory management system (AIMS) that monitors it in real-time. Using RFID technology, the Continuum Spine cabinet is able to recognize when brace contents are removed, returned, and when new products are added. With faster access to brace configuration and fit, patients can be mobilized faster and discharged sooner.



6

\*Follow QR codes studies and data

## Continuum<sup>®</sup> Outpatient & Non-Acute Facility Solutions

Continuum Solutions can deliver operational efficiencies beyond the inpatient hospital environment. Clinicians across the healthcare ecosystem will benefit from the integration of paperless billing documentation and automated real-time inventory control. The cloud-based features provide business analytic tools that help manage costs and product orders across multiple locations.

For hospital outpatient departments, The Continuum System will offload the inventory cost to a durable medical equipment (DME) provider. Privately-owned physician practices and hospital-owned DMEs will be able to incorporate the part B charge capture to drive revenue.

### Applicable Environments:

- Long-term Care Facilities
- Skilled Nursing Facilities
- Orthopedic Clinics
- Urgent Care Clinics
- Outpatient Hospital Departments
- Neurology Practices

### Available Systems:

- Vault/VaultEX Inventory Management System
- AIR Inventory Management System
- NPWT Inventory Management System



# Outpatient and Non-Acute Facility Solutions

UP

## DME Owned

### Drive Revenue with Continuum Real-time Inventory and Charge Capture Systems



**\$ 99.6%** Charge Capture Rate<sup>4</sup>

**10%** Reduction In Consumption Error Rate<sup>1</sup>

For Physician-owned clinics that are able to bill for DMEPOS, Continuum solutions will be the perfect platform to begin Part B billing. Along with hospital owned DMEs, these clinicians will be able to capitalize on Continuum's documentation and digital chain of custody technology. The Continuum System will identify records gaps and assign accountability to clinicians in a manner that avoids claim rejections and missed billing opportunities. Small clinics will benefit from the automated inventory checks and reordering that remove the burden of these activities from the staff. The Continuum System's cloud-based platform delivers these features to a central location such that multiple facilities across the map can be managed simultaneously. The Continuum System is the ideal for growing practices looking to capitalize on DMEPOS profit, without the logistical overhead required to individually manage these products.



## DME Partner

### Reduce Inventory Overhead and Improve Staff Efficiencies by implementing Continuum Systems with a DME Partner



**26%** Reduction in Billing Errors<sup>4</sup>

**<2 Min** Clinical Documentation per Case<sup>1</sup>

The Continuum solution presents a unique cost savings opportunity for facilities and departments unable to directly bill for Part B reimbursement. For facilities purchasing products outright, implementing Continuum with a DME provider will allow the hospital to offload the costs to DME. As a benefit for both DME and facility, The Continuum System's documentation and digital chain of custody will cut down on lost inventory and rejected claims.



## NPWT

### Transparent Tracking with Continuum Negative Pressure Wound Therapy

**\$36,000** Annual Savings per Pump<sup>3</sup>

**2611** Rental Days Tracked<sup>3</sup>

Leveraging RFID, GPS and cloud-based software systems, The Continuum System is designed to work in tandem with healthcare systems, insurance providers, and standalone components to provide unparalleled levels of automation and precision to the world of NPWT. Through an integrated digital chain of custody and EMR integration, the system will provide clear daily billing and may even help recover lost equipment. With The Continuum System, clinicians will be able to access, utilize, and document the device usage with a fraction of the time as a manual, paper-based system.



\*Follow QR codes studies and data







**CONTINUUM<sup>®</sup>**

**Systems  
and  
Technology  
Overview**

# VaultEX Cabinet

Discharge, Outpatient and Non-Acute Facility Solutions

## System Overview

VaultEX cabinet is a real-time inventory and charge capture solution that uses RFID technology to provide security and clinician accountability for orthopedic soft goods and supplies. It captures all the value of a traditional Vault in a self-contained unit, avoiding the need for room conversion. The system allows up to four units to be linked to a single interface, enabling a simple means of expanding controlled inventory. The Continuum® System interfaces with your EMR system, allowing a product to be assigned to a patient reducing time for documentation and patient processing.

RFID technology provides a digital chain of custody, documenting who badged into the cabinet and if an item(s) were removed or returned. New products are automatically tabulated and added to inventory. Once inventory is detected below PAR levels, The Continuum System will reorder automatically. This automated inventory management reduces the burden of monitoring stock by the clinical staff or DME.

### The Continuum® VaultEX Cabinet offers a wide range of benefits:

- Business analytics and performance reports
- Real-time secure inventory management
- Automated re-order and replenishment
- Optimized inventory levels
- Digital chain of custody
- Staff accountability
- Paperless solution
- UDI compliant

- Integrated mobile cart allows for inventory assignment and CMS documentation on the go.



### System Overview

The Vault system converts a preexisting room into a secure storage space that utilizes RFID technology to provide real-time inventory checks. Removal of any inventory is attached to the specific user accessing the vault. The Continuum® System is integrated with the EMR of the facility in order to assign the inventory to active patients for billing. The Continuum enabled Tablet allows for staff to assign inventory and obtain CMS required documentation and patient signature in a mobile platform. This completes a digital chain of custody that prevents material losses and streamlines the workflow to promote charge capture and ease the burden of discharge paperwork.

**The Continuum VAULT Closets provide all the benefits of the VaultEX system in a larger facility space.**



# VaultEX NPWT (Negative Pressure Wound Therapy)

All Continuum Solutions

## System Overview

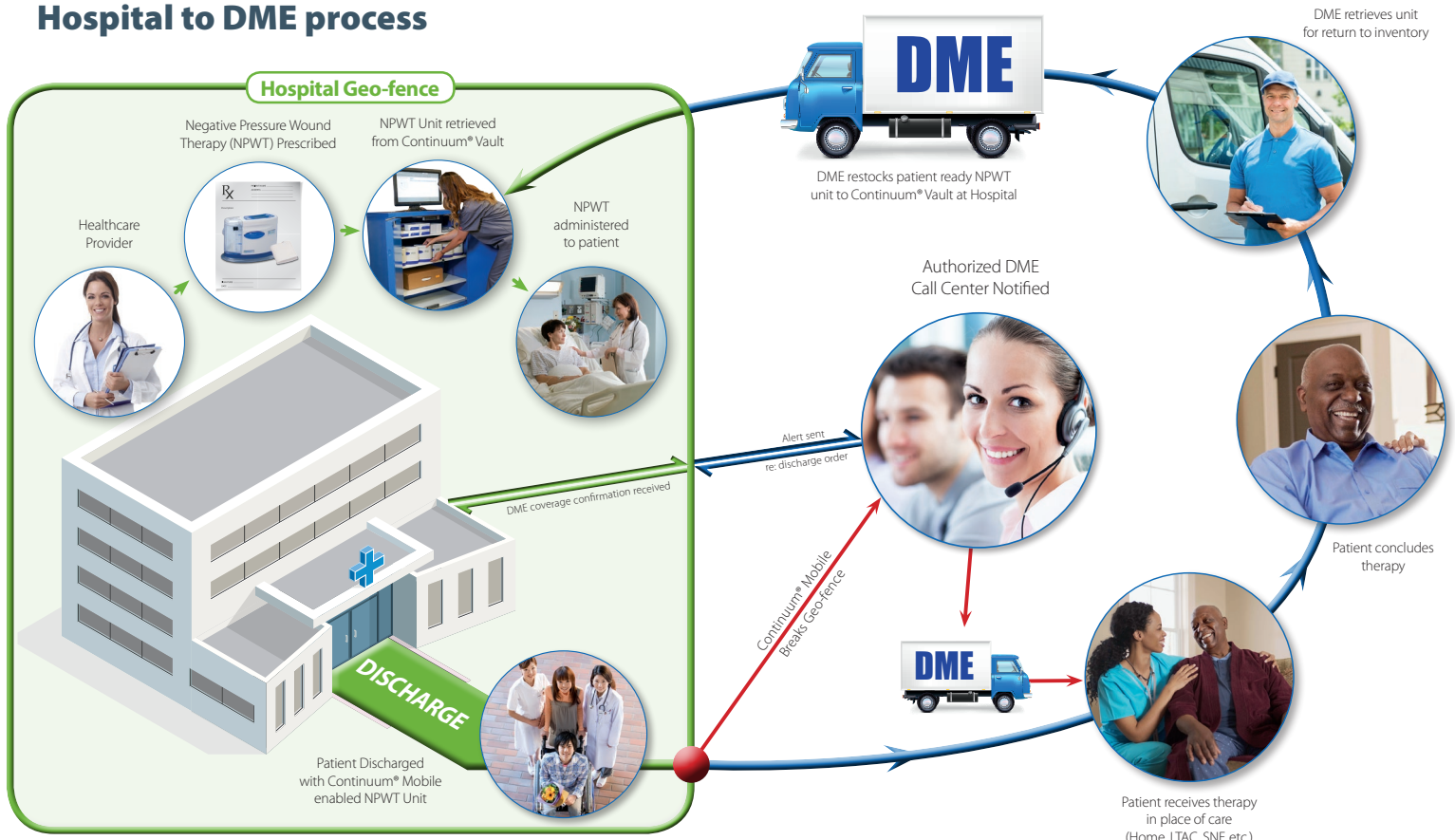
DeRoyal's Continuum® Negative Pressure Wound Therapy solution aims to provide the highest level of patient care and customer satisfaction through the application of proprietary advanced clinical technologies. Combining RFID and GPS automation, our paperless Continuum system allows for real time tracking of NPWT devices, EMR integration, and inventory management that results in a timely patient discharge to home. These technologies combined with our powerful, simple-to-use, low profile negative pressure therapy unit help to create optimal patient outcomes.

## Continuum Of Care For All

Use The Continuum® System to increase control of your patient's care, discharge process, supply chain logistics and visibility:

- Automated daily, weekly, and monthly reporting
- Accurate reports for equipment, dressing, and accessory utilization by patient or clinician
- RFID/GPS tracks NPWT units throughout hospital even after discharge
- Guarantees user accountability via digital chain of custody
- Real-time inventory knowledge
- Geo-fence automatically detects when unit has been transferred to at-home care and notifies DME

## Hospital to DME process



### System Overview

Continuum SPINE is an innovative solution and an integral part of DeRoyal's Spine Bracing Program. Continuum Spine is a cabinet that houses LSO/TLSO spinal braces and is equipped with an automated inventory management system (AIMS) that monitors its contents in real-time. Using RFID technology, the Continuum Spine cabinet is able to recognize when brace contents are removed, returned, or when new products are added. The visual touch screen shows the description and volume of each product and the cabinet initiates automatic reorders on a weekly basis to reduce the risk it runs out of stock.

#### Compatible with:



##### H4 Dial

Engineered for unprecedented durability, micro-adjustable fit, and allows for quick release.

#### MAXalign® LSO & TLSO ORTHOSES

Powered by the BOA® Fit System

- Universal brace design accommodates patient waist sizing requirements from 24" – 70"\*  
\*Greater than 60" requires a brace extension panel (sold separately)
- Powered by the BOA® Fit System for powerful and secure compression
- Compressed foam softgoods featuring antimicrobial pad overlay helps enhance breathability and reduce odors during prolonged use
- Removable lateral panels for step down/low-profile design for smaller/skinnier patients (LSO & TLSO-S only)



##### H2 Dial

The dial that started it all, the H2 is extremely durable, micro-adjustable, and allows for quick release.

#### ULTRalign® + Thoracic / Lumbar Sacral Orthoses (TLSO & LSO)

Powered by the BOA® Fit System

- Low-profile and lightweight design allows the brace to be worn under second layer of clothing to be less noticeable
- Posterior, anterior, and lateral panels provide optimal support and immobilization and can be heat molded for a truly customized fit
- The ULTRalign LSO & TLSO spine braces are compatible with all DeRoyal® spine brace accessories to accommodate the unique clinical needs of each patient



## System Overview

The Continuum® AIR is a handheld RFID scanning device that works in conjunction with The Continuum System app. Continuum AIR has a unique ability to read hundreds of tags within seconds along with an automatic reordering and reconciliation process that saves valuable employee time. With the ability to capture tags faster and with ease, the Continuum AIR counts items when received, scans existing inventory levels, and captures supplies dispensed to patients. Continuum AIR links dispensed products to patient demographics via an interface to the EMR of the facility. At the point of delivery, the tablet allows the patient to sign an electronic proof of delivery, ensuring that the charge is captured.

### The Continuum® AIR technology key benefits:

- Electronic patient signature on proof of delivery
- EMR interface allows patient selection
- Simplified system allowing for increased focus on patient care
- Web-based inventory and usage data available in real-time including expiration information
- Time-saving inventory management
- Increased charge capture



\*data on file







A person is shown from the waist up, wearing a pink long-sleeved button-down shirt and a black lumbar brace. The brace is secured with a large black dial on the left side. The person is also wearing light-colored pants. The background is a soft, out-of-focus green and yellow, suggesting an outdoor setting. The text 'Orthopedics and Bracing Continuum® Products' is overlaid in a bold, blue, sans-serif font. The brace itself has 'DeLoyd PROlign EXT' printed on it in a light blue color.

**Orthopedics  
and  
Bracing  
Continuum®  
Products**

DeLoyd  
PROlign  
EXT

# Orthopedics and Bracing

## Cervical & Spine



HCPCS CODE: L0120

### Contoured Cervical Collar

- Medium density foam construction
- Breathable cotton stockinette liner
- Additional cover included for better patient hygiene
- Deep contour holds the head in a neutral position

**Indications:** Cervical facet syndrome; Cervical sprains and strains; Discogenic pain; Degenerative disc disease with and without radiculopathy

Size	Length	2½"	3"	4"
Universal	22"	14-100A-00	14-101A-00	14-102A-00



HCPCS CODE: L0172

### Rigid Cervical Collar

- 2-piece design restricts flexion, extension and rotation while supporting the occipital and mandibular areas
- Constructed of Plastazote® foam
- Large trachea opening allows quick access for carotid pulse monitoring, emergency airway procedures and visualization
- Posterior ventilation holes reduce heat and moisture
- Not made with natural rubber latex

**Indications:** Provides superior immobilization for both extrication and rehabilitation; Post-operative discectomy and cervical fusion

Size	Circumference	1.25"	1.75"	2.25"	3.25"	4.25"
Infant	6" - 8"	14-112A-99	—	—	—	—
Pediatric	8" - 11"	—	14-112A-98	—	—	—
Small	10" - 13"	—	—	14-104A-02	14-105A-02	14-106A-02
Medium	13" - 16"	—	—	14-104A-03	14-105A-03	14-106A-03
Large	16" - 19"	—	—	14-104A-04	14-105A-04	14-106A-04
X-Large	19" +	—	—	14-104A-05	14-105A-05	14-106A-05

### EMT Select Extrication Collar

- 1-piece flat design allows efficient storage where space is limited
- Universal/adjustable to four adult and three pediatric sizes
- Locking tabs, slide adjustment and reflective sizing indicators for maximum hold
- Closed-cell foam liner to help prevent skin breakdown
- Large trachea opening allows easy access for carotid pulse monitoring, emergency airway procedures and visualization

**Indications:** Provides superior immobilization for both extrication and rehabilitation; Cervical trauma

Size	Front	Circumference	Qty	Product #
Adult	3½"	11" - 23"	1 Each	14-103A-00
Pediatric	1½"	8" - 18"	1 Each	14-103A-98



HCPCS CODE: L0150

### XTW Extended Wear Collar

- Designed to help restrict flexion, extension, lateral bending and axial rotation
- High density polyethylene frame for maximum rigidity and support
- Shoulder and mandible contours for increased stability
- Anterior and posterior flex tabs for individual comfort
- Open-cell liner helps prevent skin breakdown
- Five adult sizes to ensure best patient fit
- Not made with natural rubber latex

**Indications:** Cervical sprains and strains; Cervical spinal stenosis; Cervical disc displacement; Cervical arthritis; Whiplash injury; Cervical spondylosis and spondylolisthesis; Degenerative disc disease; Cervicalgia

Size*	Collar	Collar & Pad Set
Adult X-Short	14-108A-01	14-109A-01
Adult Short	14-108A-02	14-109A-02
Adult Regular	14-108A-03	14-109A-03
Adult Tall	14-108A-04	14-109A-04
Adult X-Tall	14-108A-05	14-109A-05

\*Measure using the XTW sizing guide.



HCPCS CODE: L0172

# Orthopedics and Bracing

## Cervical & Spine



HCPCS CODE: L0174

### Capital™ Cervical Collar

- Designed to help restrict flexion, extension, lateral bending and axial rotation
- Reinforced sternal padding for optimal support and comfort
- Shoulder and mandible contours for increased stability
- Sheer finished open-cell liner is specifically designed to help prevent skin breakdown and provide sustained comfort during long-term use
- Includes replacement pad set
- Not made with natural rubber latex

**Indications:** Cervical sprains and strains; Cervical spinal stenosis; Cervical disc displacement; Cervical arthritis; Whiplash injury; Cervical spondylosis and spondylolisthesis; Degenerative disc disease; Cervicalgia

#### Size

Adult Super Short  
Adult Stout  
Adult X-Small  
Adult Short  
Adult Regular  
Adult Large

#### Product #

14-115A-01  
14-115A-02  
14-115A-03  
14-115A-04  
14-115A-05  
14-115A-06

\*Measure using the Capital™ Collar Sizing Guide.



HCPCS CODE: L0174

### Capital™ Collar Enhanced

Powered by the BOA® Fit System

- Patented design featuring a micro-adjustable dial powered by the BOA® Fit System that allows collar height modification in order to fit most patients
- Includes compliance ring to ensure patient compliance
- Reinforced sternal padding for optimum support and comfort
- Designed to help restrict flexion, extension, lateral bending and axial rotation
- Shoulder, mandible and occipital contours for increased stability
- Sheer finished open-cell liner is specifically designed to help prevent skin breakdown and provide sustained comfort during long-term use
- Not made with natural rubber latex

**Indications:** Cervical sprains and strains; Cervical spinal stenosis; Cervical disc displacement; Cervical arthritis; Whiplash injury; Cervical spondylosis and spondylolisthesis; Degenerative disc disease; Cervicalgia

#### Size

Universal

#### Product #

14-114A-00

### Eclipse® Cervical Collar

- Semi-rigid open frame design helps ensure optimal immobilization
- Quick snap fitting disk makes fitting simple
- Moisture-wicking, cloth-lined foam for increased patient comfort
- Multiple chin height settings
- One size fits most

**Indications:** Cervical sprains and strains; Cervical spinal stenosis; Cervical disc displacement; Cervical arthritis; Whiplash injury; Cervical spondylosis and spondylolisthesis; Degenerative disc disease; Cervicalgia

**Size**  
Universal

**Product #**  
14-116A-00



HCPCS CODE: L0172

### Standard Over-Door Traction Unit

- Unit comes with standard discard flannel head halter
- 12" spreader bar, traction cord and 20 lb. vinyl water bag included
- Fits easily on any door

**Indications:** Degenerative disc disease; Cervical facet syndrome; Herniated nucleus pulposus with or without radiculopathy; Chronic cervical strains

**Size**  
Universal

**Product #**  
13-897A-00



HCPCS CODE: E0941NU

# Orthopedics and Bracing

## Cervical & Spine



### LSO

HCPCS Code: L0637 or L0650

### MAXAlign® LSO

Powered by the BOA® Fit System

- Universal brace design accommodates patient waist sizing requirements from 24" – 70"\*  
\*Greater than 60" requires a brace extension panel (sold separately)
- Powered by the BOA® Fit System for powerful and secure compression
- Compressed foam softgoods featuring antimicrobial pad overlay helps enhance breathability and reduce odors during prolonged use
- Removable lateral panels for step down/low-profile design for smaller/skinnier patients (LSO & TLSO-S only)

**Indications:** Post-operative lumbar fusion; Laminectomy, Discectomy; Lumbar compression fractures; Degenerative disc disease; Osteoporosis; Chronic Low back pain; Spondylolisthesis; Spondylolysis; Spinal stenosis; Spinal osteoarthritis; Facet syndrome



### TLSO-D

HCPCS Code: L0456 or L0457

### MAXAlign® TLSO-D

Powered by the BOA® Fit System

- All features of the MAXAlign® LSO Spine Brace (except lateral panels) and:
  - Multi-position DLE shoulder strap anchoring for varying shoulder restriction
  - Easy DLE height adjustment accommodates varying patient heights
  - Adjustable chest strap to prevent under arm digging and keep shoulder straps in place

**Indications:** Post-operative thoracic/lumbar fusion; Laminectomy; Discectomy; Compression fractures; Degenerative disc disease; Osteoporosis; Single column instability; Facet syndrome



### TLSO-S

HCPCS Code: L0464

### MAXAlign® TLSO-S

Powered by the BOA® Fit System

- All features of the MAXAlign® LSO Spine Brace and:
  - Short brace design for patients that are less than 6' tall (20-1250A-00)
  - Standard brace design for patients that are over 6' tall (20-1280A-00)
  - Sternal Pad height adjustment mechanism can be done with one hand with without tools
  - Shoulder straps can be worn over or under the shoulder for patient comfort
  - Shoulder straps feature quick release buckles for simple donning & doffing
  - Removable posterior thoracic extension (PTE) to accommodate patient height and to step down the brace (LSO)

**Indications:** Post-operative thoracic/lumbar fusion; Laminectomy; Discectomy; Compression fractures; Degenerative disc disease; Osteoporosis; Single column instability; Facet syndrome

Description	Size	Belt Adjustment Length	Product #
LSO	Universal	24" - 59"	20-1260A-00
TLSO w/DLE	Universal	24" - 59"	20-1270A-00
TLSO w/SPK	Universal	24" - 59"	20-1280A-00
TLSO w/Short SPK	Universal	24" - 59"	20-1250A-00
Extension Panel			20-MEP70

### ULTRAlign®+ Thoracic Lumbar Sacral Orthosis

- Constructed of hook receivable material with soft, breathable liner that provides a cooler, lighter fit
- Patented dual dynamic closure system allows for adjustability and maximum compression
- Combines heat-moldable anterior, posterior, and lateral plastic supports for rigid support
- Available in 15° lordosis
- DLE (Dorsal Lumbar Extension) or SPK (Sternal Pad Kit) available for maximum control
- TLSO meets requirements for most T6 to L5 pathologies

**Indications:** Post-operative thoracic/lumbar fusion; Laminectomy or discectomy; Compression fractures; Degenerative disc disease; Osteoporosis; Single column instability immobilization; Facet syndrome

Size	Product #
Small	20-1207A-02
Medium	20-1207A-03
Large	20-1207A-04
X-Large	20-1207A-05
XX-Large	20-1207A-06

Accessories	Product #
Dorsal Lumbar Extension	20-1206A-00
Sternal Pad Kit	20-1207A-00

### ULTRAlign®+ Thoracic Lumbar Sacral Orthosis

Powered by the BOA® Fit System

Same features of the ULTRAlign® + TLSO (except lateral panels) and:

- Powered by the BOA® Fit System for a powerful and secure closure that is easy for the patient to tighten with the turn of a dial
- Dial allows for micro-adjustability and on-the-fly adjustment

Size	Product #
Small	20-1291A-02
Medium	20-1291A-03
Large	20-1291A-04
X-Large	20-1291A-05
XX-Large	20-1291A-06

### ULTRAlign®+ TLSO Sizing Guide

Sizing determined by three circumferential measurements:

1. 1" below tip of breast bone or xyphoid process
2. Around navel or waist
3. Around fullest area of trochanter or hips

Non-Tapered	Xyphoid	Waist	Trochanter
Small	31" - 35"	31" - 35"	31" - 35"
Medium	34" - 38"	32" - 38"	34" - 39"
Large	37" - 41"	35" - 41"	38" - 42"
X-Large	38" - 45"	38" - 45"	38" - 45"
XX-Large	45" - 53"	45" - 53"	45" - 53"
XX-Large	40" - 46"	39" - 47"	43" - 49"



**w/ SPK**  
HCPCS Code: L0460



**w/ or w/o DLE**  
HCPCS Code: L0458



### TLSO

Pictured with the BOA® Fit System

HCPCS CODE:  
L0458 w/ or w/o DLE  
L0460 w/ SPK

# Orthopedics and Bracing

## Cervical & Spine



HCPCS CODE:  
L0637 or L0650

## ULTRAlign®+ Lumbar Sacral Orthosis

Powered by the BOA® Fit System

- Powered by the BOA® Fit System for a powerful and secure closure that is easy for the patient to tighten with the turn of a dial
- Constructed of hook receivable material with soft, breathable liner that provides a cooler, lighter fit
- Dial allows micro-adjustability and on-the-fly adjustment
- Patented dual closure for maximum adjustability
- Combines anterior, posterior, and lateral plastic inserts for rigid support
- Available in 15° lordosis
- Tapered design for best patient fit
- LSO meets requirements for most L1 to L5 pathologies

**Indications:** Post-operative lumbar fusion; Laminectomy or discectomy; Lumbar compression fractures; Degenerative disc disease; Osteoporosis; Spondylolisthesis; Spondylolysis; Spinal stenosis; Facet syndrome

Size	Product #
Small	20-1206A-02
Medium	20-1206A-03
Large	20-1206A-04
X-Large	20-1206A-05
XX-Large	20-1206A-06

## ULTRAlign®+ LSO Sizing Guide

Sizing determined by three circumferential measurements:

1. 1" below tip of breast bone or xyphoid process
2. Around navel or waist
3. Around fullest area of trochanter or hips

Size	Xyphoid	Waist	Trochanter
Small	25" - 31"	25" - 31"	27" - 33"
Medium	28" - 35"	29" - 36"	32" - 38"
Large	32" - 38"	32" - 38"	35" - 41"
X-Large	35" - 42"	36" - 42"	38" - 46"
XX-Large	40" - 46"	39" - 47"	43" - 49"



### ULTRAlign®+ Lumbar Sacral Orthosis

- Constructed of hook receivable material with soft, breathable liner that provides a cooler, lighter fit
- Patented dual dynamic closure system allows for adjustability and maximum compression
- Combines heat-moldable anterior, posterior, and lateral plastic inserts for rigid support
- Available in 15° lordosis
- Tapered design for best patient fit
- LSO meets requirements for most L1 to L5 pathologies

**Indications:** Post-operative lumbar fusion; Laminectomy or discectomy; Lumbar compression fractures; Degenerative disc disease; Osteoporosis; Spondylolisthesis; Spondylolysis; Spinal stenosis; Facet syndrome

Size	Product #
Small	20-1205A-02
Medium	20-1205A-03
Large	20-1205A-04
X-Large	20-1205A-05
XX-Large	20-1205A-06



HCPCS CODE:  
L0637 or L0650

### Warrior® Spine Universal Back Brace

Powered by the BOA® Fit System

- Universal size (24" to 60" waist)
- Offered in three heights to meet patients' needs
- Patented, single pull bi-lateral sizing adjustment
- Powered by the BOA® Fit System for a powerful and secure closure that is easy for the patient to tighten with the turn of a dial
- Enlarged BOA® dials allow micro-adjustability and on-the-fly compression and adjustment with fewer turns
- Integrated anterior panels and closure hand strap for easy donning and doffing
- Soft, breathable material to provide a cool, comfortable fit
- Rounded anterior closure to accommodate varying patient anatomies (inferior and superior angulation)
- Hot/cold temperature therapy packs included with each brace

**Indications:**

**642:** Post-operative lumbar immobilization; Degenerative disc disease; Spondylolisthesis; Spondylolysis; Spinal stenosis; Postural support; Degenerative disc disease; Spinal blocks

**648:** Post-operative lumbar immobilization; Degenerative disc disease; Spondylolisthesis; Spondylolysis; Spinal stenosis; Lumbar strains and sprains; Mechanical or discogenic disc disease; Postural support; Degenerative disc disease

**650:** Post-operative lumbar fusion; Laminectomy; Discectomy; Lumbar compression fractures; Degenerative disc disease; Osteoporosis; Spondylolisthesis; Spondylolysis; Spinal stenosis; Facet syndrome

Size	Belt Adjustment Length	Product #
Warrior® Spine 642	24" - 60"	20-1212A-00
Warrior® Spine 648	24" - 60"	20-1213A-00
Warrior® Spine 650	24" - 60"	20-1214A-00



HCPCS CODE:  
20-1212A-00 - L0642  
20-1213A-00 - L0648  
20-1214A-00 - L0650

# Orthopedics and Bracing

## Cervical & Spine



HCPCS CODE:  
L0631 or L0648

### PROlign® EXT Lumbar Sacral Orthosis

Powered by the BOA® Fit System

- Powered by the BOA® Fit System for a powerful and secure closure that is easy for the patient to tighten with the turn of a dial
- Dial allows micro-adjustability and on-the-fly adjustment
- Soft, breathable material to provide a cool, comfortable fit
- Patented dual closure for adjustability
- Rigid anterior insert provides support to the intra-abdominal and viscera region helping to unload the spine under gravitational load
- Available in 25° lordosis
- Extended posterior panel for coverage from sacrococcygeal junction to the T9 vertebrae

**Indications:** Post-operative lumbar immobilization; Chronic low back pain; Lumbar muscle weakness; Lumbar strains and sprains; Mechanical or discogenic disc disease; Postural support; Degenerative disc disease; Intradiscal Electrothermal Therapy (IDET) procedure; Spinal blocks

Size	Waist Circumference	Product #
X-Small	25" - 30"	20-1204A-11
Small	30" - 35"	20-1204A-12
Medium	35" - 40"	20-1204A-13
Large	40" - 45"	20-1204A-14
X-Large	45" - 50"	20-1204A-15
XX-Large	50" - 55"	20-1204A-16



HCPCS CODE:  
L0627 or L0642

### PROlign® Lumbar Orthosis

Powered by the BOA® Fit System

- Powered by the BOA® Fit System for a powerful and secure closure that is easy for the patient to tighten with the turn of a dial
- Dial allows micro-adjustability and on-the-fly adjustment
- Soft, breathable material provides a cool comfortable fit
- Patented dual closure for infinite adjustability
- Rigid anterior insert provides support to the intra-abdominal and viscera region helping to unload the spine under gravitational load
- Features posterior plastic insert in 15° lordosis

**Indications:** Post-operative lumbar immobilization; Chronic low back pain; Lumbar muscle weakness; Lumbar strains and sprains; Mechanical or discogenic disc disease; Postural support; Degenerative disc disease; IDET procedure; Spinal blocks

Size	Waist Circumference	Product #
X-Small	25" - 30"	20-1208A-01
Small	30" - 35"	20-1208A-02
Medium	35" - 40"	20-1208A-03
Large	40" - 45"	20-1208A-04
X-Large	45" - 50"	20-1208A-05
XX-Large	50" - 55"	20-1208A-06

### PROlign® Lumbar Orthosis

- Constructed of hook receivable material with soft, breathable liner that wicks away moisture to help prevent skin breakdown
- Patented dual dynamic closure system provides instant full range adjustment and maximum compression
- Rigid anterior insert provides support to intra-abdominal and viscera region helping to unload the spine under gravitational load
- Available in 25° lordosis
- Plastic D-rings for ease of application and removal

**Indications:** Post-operative lumbar immobilization; Chronic low back pain; Lumbar muscle weakness; Lumbar strains and sprains; Mechanical or discogenic disc disease; Postural support; Degenerative disc disease; IDET procedure; Spinal blocks

Size	Waist Circumference	Product #
X-Small	25" - 30"	20-1215A-01
Small	30" - 35"	20-1215A-02
Medium	35" - 40"	20-1215A-03
Large	40" - 45"	20-1215A-04
X-Large	45" - 50"	20-1215A-05
XX-Large	50" - 55"	20-1215A-06



HCPCS CODE:  
L0627 or L0642

### Solace® Low Profile Back Brace

- Low-profile, lightweight design
- Soft, breathable material provides cool, comfortable fit increasing patient compliance
- Adjustable pulley style closure system is easy to secure and provides maximum compression
- Anterior and posterior plastic inserts provide control and support
- Plastic D-rings for ease of application and removal

**Indications:** Chronic low back pain; Lumbar muscle weakness; Lumbar sprains and strains; Mechanical or discogenic lumbar pain

Size	Waist Circumference	Product #
Small	26" - 34"	20-1203A-02
Medium	32" - 40"	20-1203A-03
Large	38" - 46"	20-1203A-04
X-Large	44" - 51"	20-1203A-05



HCPCS CODE: L0642

# Orthopedics and Bracing

## Cervical & Spine



### Criss-Cross Lumbo Sacral Support

- Durable elastic construction with hook and loop closure
- Contoured waist for maximum comfort
- Two elastic side pulls for optimal compression
- Four adjustable posterior stays for stability and support
- 12" posterior height
- Not made with natural rubber latex

**Indications:** Mild low back pain; Lumbar muscle weakness; Lumbar sprains and strains; Mechanical or discogenic thoracolumbar pain

Size	Waist Circumference	Product #
Universal	26" - 46"	20-1220A-00



### Universal 6" Rib Belt

- Constructed of knit elastic material
- Solid panel design
- Hook and loop closure for ease of application
- Available in universal, gender specific styles for best fit
- Not made with natural rubber latex

**Indications:** Fractured or bruised ribs; Intercostal strains; Costovertebral sprains

Size	Dimensions	Male #	Female #
Universal	6" x 40"	20-1202A-00	20-1201A-00



### Universal Abdominal Binder

- Choose between three (9") individual or solid (10") panel design
- Hook and loop closure
- Universal sizing reduces inventory needs
- Not made with natural rubber latex

**Indications:** Abdominal muscle strain; Soreness in abdominal region; Post-abdominal surgery

Size	Measurement*	9"	10"
Universal	27" - 48"	20-1221A-00	20-1200A-00
X-Long	up to 54"	—	20-1225A-00
XX-Long	up to 70"	—	20-1228A-00

\*Measure circumference of male waist or female hips

### Premium Clavicle Strap

- Synthetic stockinette over foam padding does not absorb water and can be worn while bathing
- Serpentine stitch design to prevent migration
- Buckle closure

**Indications:** Clavicle fractures; Grade II and III acromioclavicular separations; Osteolysis of the clavicle; AC degenerative joint pain; Mechanical cervical disease; Postural dysfunction; Sternoclavicular dislocations

Size	Product #
Child	19-203A-98
Universal	19-203A-00



HCPCS CODE: L3650

### Sling & Swathe

- Lightweight foam material provides patient comfort
- Adjustable shoulder straps attach to hook receivable sling to ensure accurate fit
- Swathe attaches at any point on sling
- Available in pediatric version
- Universal right/left

**Indications:** S/P glenohumeral acromioplasty; Surgical repairs of the rotator cuff; Anterior glenohumeral capsular reconstruction; Anterior dislocation of the G-H joint

Size	Product #
Universal	19-200A-00
Universal Pediatric	19-200A-98



HCPCS CODE: L3660

### Deluxe Sling & Swathe

- Lightweight perforated foam material provides patient comfort
- Adjustable shoulder straps attach to hook receivable sling to ensure accurate fit
- Swathe attaches at any point on sling
- Universal right/left

**Indications:** S/P glenohumeral acromioplasty; Surgical repairs of the rotator cuff; Anterior glenohumeral capsular reconstruction; Anterior dislocation of the G-H joint

Size	Swathe Size	Pouch Size	Product #
Universal	5" x 54"	13" x 19"	19-208A-00



HCPCS CODE: L3660

# Orthopedics and Bracing

## Shoulder, Arm & Elbow



### Elastic Shoulder Immobilizer

- Constructed of lightweight elastic material
- Foam wrist and humeral cuffs
- Low-profile design is contoured for patient comfort
- Hook and loop closure
- Universal right/left

**Indications:** S/P glenohumeral acromioplasty; Surgical repairs of the rotator cuff; Anterior glenohumeral capsular reconstruction; Anterior dislocation of the G-H joint

Size	Belt Size	Product #
Small	6" x 32"	19-208A-02
Medium	6" x 35"	19-208A-03
Large	6" x 38"	19-208A-04
X-Large	6" x 41"	19-208A-05
XX-Large	6" x 44"	19-208A-06



HCPCS CODE: L3660

### Universal Foam Shoulder Immobilizer

- Constructed of laminated foam
- Wrist cuff, humeral cuff and shoulder strap are adjustable and can be placed anywhere on belt to achieve desired fit
- Provides shoulder and upper arm immobilization following dislocation or post-surgical application
- Universal right/left

**Indications:** S/P glenohumeral acromioplasty; Surgical repairs of the rotator cuff; Anterior glenohumeral capsular reconstruction; Anterior dislocation of the G-H joint

Size	Belt Size	Wrist Cuff Size	Product #
Universal	6½" x 52"	3½" x 13"	19-201A-00

### Shoulder Immobilizer w/ Foam Straps

- Constructed of canvas material with foam shoulder and waist straps
- Adjustable straps feature O-ring/hook and loop closure
- Thumb loop helps prevent wrist drop
- Universal right/left

**Indications:** S/P glenohumeral acromioplasty; Surgical repairs of the rotator cuff; Anterior glenohumeral capsular reconstruction; Anterior dislocation of the G-H joint

Size	Pouch Size	Product #
X-Small	6" x 12½"	19-202A-01
Small	7" x 13½"	19-202A-02
Medium	8" x 16½"	19-202A-03
Large	9" x 19½"	19-202A-04
X-Large	9" x 22½"	19-202A-05



HCPCS CODE: L3660

### Shoulder Immobilizer Cotton w/ Foam Straps

- Deep pocket pouch design constructed of black cotton material
- Foam straps provide additional patient comfort
- Adjustable straps feature O-ring/hook and loop closure
- Thumb loop helps prevent wrist drop
- Universal right/left

**Indications:** S/P glenohumeral acromioplasty; Surgical repairs of the rotator cuff; Anterior glenohumeral capsular reconstruction; Anterior dislocation of the G-H joint

Size	Pouch Size	Product #
X-Small	6¾" x 11"	19-210A-01
Small	8" x 13"	19-210A-02
Medium	8½" x 15"	19-210A-03
Large	9¼" x 17"	19-210A-04
X-Large	9¾" x 19"	19-210A-05



HCPCS CODE: L3660

# Orthopedics and Bracing

## Shoulder, Arm & Elbow



HCPCS CODE: L3670

### Shoulder P.A.D. III

- Unique design allows sling length to be adjusted to fit most patients
- Constructed of hook receivable material for universal adjustability
- Soft breathable liner helps wick away moisture
- Foam block provides 35° of abduction
- Shoulder and waist straps can be trimmed to desired length
- Quick-release buckle on waist strap for ease of application and removal
- Adjustable thumb loop to help prevent wrist drop
- Arm can be positioned anteriorly or posteriorly depending on post-operative requirements
- Exercise ball packaged with product
- Universal right/left and size

**Indications:** Surgical rotator cuff repairs; Anterior glenohumeral capsular reconstruction; Dislocation/subluxation of G-H joint; S/P glenohumeral acromioplasty; Bankart repairs; Soft tissue repairs; Shoulder sprains and strains

Size	Product #
Universal	19-205A-00



HCPCS CODE: L3670

### Shoulder P.A.D. II

- Constructed of hook receivable material for adjustability
- Soft, breathable liner wicks away moisture
- Foam block provides 35° of abduction
- Shoulder and waist straps can be trimmed to desired length
- Adjustable forearm strap for open or closed pouch design
- Quick-release buckle on waist strap for ease of application and removal
- Adjustable thumb loop to help prevent wrist drop
- Arm can be positioned anteriorly or posteriorly depending on post-operative requirements
- Exercise ball packaged with product
- Universal right/left

**Indications:** Surgical rotator cuff repairs; Anterior glenohumeral capsular reconstruction; Dislocation/subluxation of G-H joint; S/P glenohumeral acromioplasty; Bankart repairs; Soft tissue repairs; Shoulder sprains and strains

Size	Pouch Size	Product #
Small	7" x 16"	19-205A-02
Medium	7" x 17"	19-205A-03
Large	7" x 18"	19-205A-04
X-Large	7" x 19"	19-205A-05



### Arm Sling w/ Foam Strap

- Deep pocket pouch design constructed of black cotton material
- Foam shoulder strap provides additional patient comfort
- Thumb loop helps prevent wrist drop
- Adjustable slide buckle on strap for best fit
- Hook and loop closure with O-rings

**Indications:** Cast support; Injuries to the arm, wrist or hand; Acromioclavicular sprains; Anterior glenohumeral dislocations

Size	Pouch Size	Strap Length	Product #
X-Small	6¾" x 11"	2" x 27"	19-211A-01
Small	8" x 13"	2" x 34"	19-211A-02
Medium	8½" x 15"	2" x 37"	19-211A-03
Large	9¼" x 17"	2" x 37"	19-211A-04
X-Large	9¾" x 19"	2" x 42"	19-211A-05



HCPCS CODE: A4565

### Premium Arm Sling

- Deep pocket pouch design constructed of black cotton material
- Infant and child sizes feature cartoon print
- Foam shoulder pad provides additional patient comfort
- Thumb loop helps prevent wrist drop
- Adjustable slide buckle on strap for best fit
- Hook and loop closure with O-rings

**Indications:** Cast support; Injuries to the arm, wrist or hand; Acromioclavicular sprains; Anterior glenohumeral dislocations

Size	Pouch Size	Strap Length	Product #
Infant	5" x 9"	1" x 21"	19-207A-99
Child	6" x 11"	1" x 27"	19-207A-98
Small	7" x 13"	2" x 34"	19-207A-02
Medium	8" x 17"	2" x 37"	19-207A-03
Large	9" x 20"	2" x 37"	19-207A-04
X-Large	9" x 23"	2" x 42"	19-207A-05



HCPCS CODE: A4565

# Orthopedics and Bracing

## Shoulder, Arm & Elbow



HCPCS CODE: A4565

### Arm Sling

- Deep pocket pouch design constructed of black cotton material
- Foam shoulder pad provides additional patient comfort
- Thumb loop helps prevent wrist drop
- Adjustable slide buckle on strap for best fit
- Hook and loop closure with O-rings

**Indications:** Cast support; Injuries to the arm, wrist or hand; Acromioclavicular sprains; Anterior glenohumeral dislocations

Size	Pouch Size	Strap Length	Product #
Infant	5" x 9"	1" x 21"	19-204A-99
Child	6" x 11"	1" x 27"	19-204A-01
Small	7" x 13"	2" x 34"	19-204A-02
Medium	8" x 17"	2" x 37"	19-204A-03
Large	9" x 20"	2" x 37"	19-204A-04
X-Large	9" x 23"	2" x 42"	19-204A-05



HCPCS CODE: A4565

### Universal Arm Sling

- Constructed of heavy-duty canvas material
- Features easy fold-back universal design
- Foam shoulder pad provides additional comfort
- Hook and loop closure with O-rings

**Indications:** Cast support; Injuries to the arm, wrist or hand; Acromioclavicular sprains; Anterior glenohumeral dislocations

Size	Pouch Size	Strap Length	Product #
Adult	8" x 19"	2" x 37"	19-204A-00
Child	5" x 9"	1" x 31"	19-206A-98

### Hypercontrol® Elbow Brace

- Constructed of breathable Tri-Tex™ material with four way stretch
- Medial and lateral hinges control hyperextension of the elbow
- Criss-cross straps assist in controlling hyperextension
- Elbow pad protects bony prominence
- Proximal and distal straps provide secure fit and help prevent migration



**Indications:** Medial/lateral ligament instabilities; Hyperextension of the elbow; UCL sprains; Valgus Extension Overload (VEO); Joint capsular sprains

Size	Forearm Circumference*	Product #
X-Small	8" - 9"	5-1103A-01
Small	9" - 10"	5-1103A-02
Medium	10" - 11"	5-1103A-03
Large	11" - 12"	5-1103A-04
X-Large	12" - 13"	5-1103A-05
XX-Large	13" - 14"	5-1103A-06

HCPCS CODE: L3710

\*Measure largest circumference of forearm

### Warrior® Post-Operative Elbow Brace

- Single hinge lateral application for easy donning and doffing
- Hinge is easily adjusted in 10° increments (Flexion: 0° to 120°, Extension: 0° to 90°)
- Length can be adjusted from 16" to 24"
- Shoulder strap included for extra support and immobilization
- Universal size, right/left specific



**Indications:** Post-operative rehabilitation; Olecranon fractures; Radial head fractures; Hairline fracture of the radius, humerus and ulna; Ligamentous reconstruction procedures of the elbow

Size	Description	Product #
Universal	Left	5-1104A-00
Universal	Right	5-1105A-00

HCPCS CODE: L3760 or L3761

# Orthopedics and Bracing

## Shoulder, Arm & Elbow

### Neoprene Elbow Sleeve



- 1/8" neoprene construction provides compression, warmth, and support
- Anatomically contours to the elbow
- Elbow strap provides adjustable compression

**Indications:** Tendonitis; Osteoarthritis; Arthritis; Olecranon bursitis; Medial and lateral epicondylitis

Size	Forearm Circumference	Product #
X-Small	8" - 9"	5-1102A-01
Small	9" - 10"	5-1102A-02
Medium	10" - 11"	5-1102A-03
Large	11" - 12"	5-1102A-04
X-Large	12" - 14"	5-1102A-05
XX-Large	14" - 16"	5-1102A-06

### Premium Tennis Elbow Support



- Made of lightweight, ventilated material
- Support is low-profile, increasing patient compliance
- Inner pad can be strategically placed for maximum pain relief
- D-ring closure for easy application
- Universal size fits most patients

**Indications:** Medial and lateral epicondylitis

Size	Measurement	Product #
Universal	2" x 16"	5-1100A-00

### Universal Neoprene Tennis Elbow Support



- 1/8" neoprene construction provides compression, warmth and support
- Adjustable felt buttress can be placed just below the epicondyle for pain relief
- Loop lock contact closure for adjustable compression and application
- Universal size fits most patients

**Indications:** Medial and lateral epicondylitis

Size	Measurement	Product #
Universal	3" x 16"	5-1102A-00

### Suede Leatherette Wrist & Wrist/Forearm Splint

- Suede leatherette material reduces migration
- Unique wedge contour design ensures an intimate fit increasing patient comfort
- Extra-wide loop lock strap at wrist for compression and support
- Removable/malleable palmar and dorsal stays
- Does not extend past distal palmar crease allowing full finger range of motion

**Indications:** Carpal tunnel syndrome; Sprains and strains of the wrist; Post-operative immobilization and rehabilitation; Stable fractures of the distal radius and carpal joints



Size	Length	Wrist		Length	Wrist/Forearm	
		Right	Left		Right	Left
Pediatric	—	—	—	6"	23-355A-98	23-354A-98
Child	—	—	—	9"	23-321A-98	23-320A-98
Small	8"	23-353A-02	23-352A-02	11"	23-321A-02	23-320A-02
Medium	8"	23-353A-03	23-352A-03	11"	23-321A-03	23-320A-03
Large	8"	23-353A-04	23-352A-04	11"	23-321A-04	23-320A-04
X-Large	8"	23-353A-05	23-352A-05	11"	23-321A-05	23-320A-05

HCPCS CODE:  
L3908 or L3984

### Black Foam Wrist/Forearm Splint

- Comfortable black foam material with tricot lining
- Extra-wide loop lock strap at wrist for compression and support
- Removable/malleable palmar and dorsal stays
- Does not extend past distal palmar crease allowing full finger range of motion

**Indications:** Carpal tunnel syndrome; Sprains and strains of the wrist; Post-operative immobilization and rehabilitation; Stable fractures of the distal radius and carpal joints



HCPCS CODE:  
L3908 or L3984

Size	Length	Right	Left
Pediatric	6"	23-306A-01	23-307A-01
Small	11"	23-306A-02	23-307A-02
Medium	11"	23-306A-03	23-307A-03
Large	11"	23-306A-04	23-307A-04
X-Large	11"	23-306A-05	23-307A-05

# Orthopedics and Bracing

## Wrist, Hand, Thumb & Finger



HCPCS CODE:  
L3908 or L3984

### Universal Black Foam Wrist & Wrist/Forearm Splint

- Comfortable black foam material with tricot lining
- Malleable palmar and dorsal stays provide anatomical fit and proper support
- Moveable dorsal stay makes product universal in size
- D-ring closures for easy application and removal

**Indications:** Sprains and strains of the wrist; Tendonitis; Tenosynovitis of the wrist and distal forearm

Size	Length	Right	Left
Universal	8"	23-338A-00	23-339A-00
Universal	10"	23-308A-00	23-309A-00



HCPCS CODE: L3908

### Black Wrist Splint

- Constructed of comfortable black foam material
- Malleable palmar stay provides anatomical fit and rigid support
- Low-profile and lightweight design
- D-ring closures for easy application and removal
- Does not extend past distal palmar crease allowing full finger range of motion

**Indications:** Mild sprains and strains of the wrist; Tendonitis, Carpal tunnel syndrome; Overuse injuries; Tenosynovitis

Size	Length	Right	Left	Length	Right	Left
Pediatric	4"	23-302A-98	23-303A-98	—	—	—
X-Small	8"	23-302A-01	23-303A-01	10"	23-336A-01	23-337A-01
Small	8"	23-302A-02	23-303A-02	10"	23-336A-02	23-337A-02
Medium	8"	23-302A-03	23-303A-03	10"	23-336A-03	23-337A-03
Large	8"	23-302A-04	23-303A-04	10"	23-336A-04	23-337A-04
X-Large	8"	23-302A-05	23-303A-05	10"	23-336A-05	23-337A-05



HCPCS CODE: L3908

### Warrior® Wrist Splint

- Constructed of a waffled spacer material for breathability and patient comfort
- Single pull lace closure for easy application
- Malleable palmar stay provides a more customized fit
- Available in universal and x-large sizes
- Does not extend past distal palmar crease allowing full finger range of motion

**Indications:** Mild sprains and strains of the wrist; Tendonitis; Carpal tunnel syndrome; Overuse injuries; Tenosynovitis

Size	Length	Right	Left
Universal	8"	23-342A-00	23-343A-00
X-Large	8"	23-342A-05	23-343A-05

### Lace Up Suede Leatherette Wrist Splint

- Soft, perforated suede leatherette material with nylon tricot lining
- Removable/malleable palmar stay
- Single pull lace closure for compression and easy adjustment
- Does not extend past distal palmar crease allowing full finger range of motion

**Indications:** Mild sprains and strains of the wrist; Tendonitis; Carpal tunnel syndrome; Overuse injuries; Tenosynovitis

Size	Length	Right	Left
X-Small	8"	23-325A-01	23-326A-01
Small	8"	23-325A-02	23-326A-02
Medium	8"	23-325A-03	23-326A-03
Large	8"	23-325A-04	23-326A-04
X-Large	8"	23-325A-05	23-326A-05



HCPCS CODE: L3908

### Premium Wrist Splint

- Breathable material with four way stretch provides patient comfort
- Removable/malleable palmar stay
- Low-profile and lightweight design
- D-ring closures for easy application and removal
- Does not extend past distal palmar crease allowing full finger range of motion

**Indications:** Mild sprains and strains of the wrist; Tendonitis, Carpal tunnel syndrome; Overuse injuries; Tenosynovitis

Size	Length	Right	Left
X-Small	8"	23-318A-01	23-319A-01
Small	8"	23-318A-02	23-319A-02
Medium	8"	23-318A-03	23-319A-03
Large	8"	23-318A-04	23-319A-04
X-Large	8"	23-318A-05	23-319A-05
XX-Large	8"	23-318A-06	23-319A-06



HCPCS CODE: L3908

### Universal Wrist Splint

- Constructed of comfortable foam material
- Malleable palmar and dorsal stays provide anatomical fit and rigid support
- Movable dorsal stay makes product universal in size
- D-ring closures for easy application and removal

**Indications:** Mild sprains and strains of the wrist; Tendonitis; Carpal tunnel syndrome; Overuse injuries; Tenosynovitis

Size	Length	Right	Left
Universal	7"	23-300A-00	23-301A-00



HCPCS CODE: L3908

# Orthopedics and Bracing

## Wrist, Hand, Thumb & Finger



HCPCS CODE: L3908

### Premium Universal Wrist Splint

- Constructed of comfortable foam material that helps keep patient's skin cool and dry
- Dynamic closure allows easy adjustment for an intimate fit
- Removable palmar and dorsal stays make product universal and allow for proper support
- Universal right/left and size fits most patients

**Indications:** Mild sprains and strains of the wrist; Tendonitis, Carpal tunnel syndrome; Overuse injuries; Tenosynovitis

Size	Length	Product #
Universal	8"	23-348A-00



HCPCS CODE: L3908

### Elastic Wrist Splint

- Cotton elastic construction provides compression
- Removable/malleable palmar stay
- Hook and loop closure for easy application and removal
- Does not extend past distal palmar crease allowing full finger range of motion

**Indications:** Mild sprains and strains of the wrist; Tendonitis, Carpal tunnel syndrome; Overuse injuries; Tenosynovitis

Size	Length	Right	Left
Pediatric	6"	23-334A-98	23-335A-98
Small	6"	23-334A-02	23-335A-02
Medium	6"	23-334A-03	23-335A-03
Large	6"	23-334A-04	23-335A-04
X-Large	6"	23-334A-05	23-335A-05



HCPCS CODE:  
L3807 or L3809

### Warrior® Boxer Fracture Brace

- Constructed of a waffled spacer material for breathability and patient comfort
- Single pull lace closure for easy application
- Positions and protects the 4<sup>th</sup> and 5<sup>th</sup> metacarpals using a malleable aluminum stay
- Malleable palmar stays allow for desired wrist positioning
- Does not extend past the distal palmar crease allowing full finger range of motion

**Indications:** Boxer's fracture; Metacarpal fracture; Proximal phalanx fracture; Middle phalanx fracture

Size	Length	Right	Left
Universal	8"	23-346A-00	23-347A-00
X-Large	8"	23-346A-05	23-347A-05



### Premium Universal Wrist & Thumb Splint

- Constructed of comfortable foam material that helps keep patient’s skin cool and dry
- Dynamic closure allows easy adjustment for intimate fit
- Removable palmar and dorsal stays make product universal and allow for proper support
- Adjustable thumb stay ensures desired thumb positioning
- Universal right/left and size fits most patients

**Indications:** De Quervain’s syndrome; Scaphoid injuries; Carpometacarpal instabilities; Metacarpal fractures; Post cast healing; Gamekeeper’s thumb; Cumulative trauma injuries

Size	Length	Product #
Universal	8"	23-314A-00



HCPCS CODE: L3809

### Black Foam Wrist & Thumb

- Constructed of comfortable foam material
- Removable/adjustable thumb and palmar stay
- D-ring closures for easy application and removal
- Does not extend past distal palmar crease allowing full finger range of motion

**Indications:** De Quervain’s syndrome; Scaphoid injuries; Carpometacarpal instabilities; Metacarpal fractures; Post cast healing; Gamekeeper’s thumb; Cumulative trauma injuries

Size	Length	Right	Left
X-Small	8"	23-310A-01	23-311A-01
Small	8"	23-310A-02	23-311A-02
Medium	8"	23-310A-03	23-311A-03
Large	8"	23-310A-04	23-311A-04
X-Large	8"	23-310A-05	23-311A-05
XX-Large	8"	23-310A-06	23-311A-06



HCPCS CODE: L3809

### Warrior® Wrist & Thumb Splint

- Constructed of a waffled spacer material for breathability and patient comfort
- Single pull lace closure for easy application
- Malleable thumb and palmar stays allow for desired wrist and thumb positioning
- Available in universal and x-large sizing
- Does not extend past distal palmar crease allowing full finger range of motion

**Indications:** De Quervain’s Syndrome; Scaphoid injuries; Carpometacarpal instabilities; Metacarpal fractures; Post cast healing; Gamekeeper’s thumb; Cumulative trauma injuries

Size	Length	Right	Left
Universal	8"	23-344A-00	23-345A-00
X-Large	8"	23-344A-05	23-345A-05



HCPCS CODE: L3809

# Orthopedics and Bracing

## Wrist, Hand, Thumb & Finger



HCPCS CODE: L3809

### Premium Wrist & Thumb Splint

- Breathable material with four-way stretch provides patient comfort
- Removable/adjustable thumb and palmar stay
- Low-profile and lightweight design
- D-ring closures for easy application and removal
- Does not extend past distal palmar crease allowing full finger range of motion

**Indications:** De Quervain's syndrome; Scaphoid injuries; Carpometacarpal instabilities; Metacarpal fractures; Post cast healing; Gamekeeper's thumb; Cumulative trauma injuries

Size	Length	Right	Left
X-Small	8"	23-304A-01	23-305A-01
Small	8"	23-304A-02	23-305A-02
Medium	8"	23-304A-03	23-305A-03
Large	8"	23-304A-04	23-305A-04
X-Large	8"	23-304A-05	23-305A-05
XX-Large	8"	23-304A-06	23-305A-06



HCPCS CODE: L3924

### Thermo-Form Thumb Splints

- Constructed of durable neoprene-type material for a smooth, comfortable splint
- Features thermoplastic piece that can be easily molded directly on patient using warm water (160°-170°F) for a custom fit
- Inside pocket holds molded thermoplastic piece that is removable when cool

**Indications:** Thumb osteoarthritis; Thumb rheumatoid arthritis; Metacarpophalangeal (MCP) joint injuries; MCP fusion; Tendonitis; Joint fractures

Size	Measurement*	Right	Left
X-Small	up to 5½"	23-324A-01	23-323A-01
Small	5½" - 6½"	23-324A-02	23-323A-02
Medium	6½" - 7½"	23-324A-03	23-323A-03
Large	7½" - 8½"	23-324A-04	23-323A-04
X-Large	8½" - 9½"	23-324A-05	23-323A-05

\*Measure wrist circumference



### Comfort Cool® Thumb Wrap

- Constructed of thin neoprene that conforms to hand contours
- Features tiny perforations for cool, comfortable wear
- Soft terry cloth lining
- Provides excellent stability without excessive bulk

**Indications:** Thumb Carpometacarpel (CMC) joint support; CMC joint arthritis/instability; Tenosynovitis of thumb extensors/abductors

Size	Measurement*	Right	Left
Small	6" - 7"	23-315A-02	23-314A-02
Medium	7" - 8"	23-315A-03	23-314A-03
Large	8" - 9"	23-315A-04	23-314A-04
X-Large	9" - 10"	23-315A-05	23-314A-05

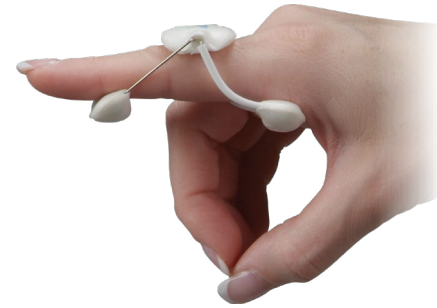
\*Measure circumference of MP joints

### LMB™ Spring Finger Extension Assist

- High quality Wire-Foam™ construction for a customized fit
- Versatile model extends Interphalangeal (PIP) joint with a slight extension effect on MP joint
- Designed for patient comfort with an emphasis on distal pad curvature
- Tension is adjustable by careful bending
- Force: 15° flexion ≈ approx. 8 oz.; 90° flexion ≈ approx. 4 lbs.

**Indications:** Finger flexion tightness; Boutonniere deformity (allows IP flexion)

Size	Measurement	Product #
X-Small	2¼"	23-333A-01
Small	2⅝"	23-333A-02
Medium	3"	23-333A-03
Large	3½"	23-333A-04
X-Large	4"	23-333A-05



HCPCS CODE: L3925

### LMB™ Spring PIP Extension Assist

- High quality Wire-Foam™ construction for a customized fit
- Shorter version of model #23-333A
- Does not interfere with the MP joint while extending the PIP joint
- Tension is adjustable by careful bending
- Force: 15° flexion ≈ approx. 8 oz.; 90° flexion ≈ approx. 4 lbs.

**Indications:** PIP joint tightness; Boutonniere deformity

Size	Measurement	Product #
X-Small	1¾"	23-316A-01
Small	1⅞"	23-316A-02
Medium	2"	23-316A-03
Large	2¼"	23-316A-04
X-Large	2⅝"	23-316A-05



HCPCS CODE: L3925

### LMB™ Finger-Hugger

- Soft Lycra® material is breathable for patient comfort and washable for hygiene
- Two positioning capabilities: dynamic extension assist and static progressive (stays included)
- Adjustable compression provides gradual edema control
- Ideal for Distalinterphalangeal (DIP) joint, PIP joint, total finger or thumb

**Indications:** Post finger fractures; Sprains; Ligament and tendon injuries; Boutonniere deformity; Mallet finger

Size	Measurement*	Product #
X-Small	1½"	23-330A-01
Small	2"	23-330A-02
Medium	2½"	23-330A-03
Large	3"	23-330A-04
X-Large	3½"	23-330A-05

\* Measure MP crease to end of finger (extended)



HCPCS CODE: L3925

# Orthopedics and Bracing

## Knee & Leg



HCPCS CODE:  
L1832 or L1833

### Warrior® Recovery Post-Operative Knee Brace

- Lever-action telescoping struts for length adjustments from 29"-18"
- Four convenient preset drop lock settings: 0°, 15°, 30°, and 45°
- Enhanced range-of-motion hinge interface for easy setting and patient compliance
- Range of motion can be set in 10° increments
- Removable Y-tabs on the straps allow for strap trimming for varying patient anatomy
- Adjustable inner pad panel to avoid incision sites and provide a more customized fit
- Customizable anti-migration strap pad for superior hold to reduce slippage
- Integrated "bend zone" on lower hinge arms allows for customization to varying patient anatomies
- Laminate reinforced padding to support prolonged use and maintain pad integrity
- Extended padding at malleoli to prevent irritation and improve comfort during use

**Indications:** Post-operative stabilization and rehabilitation; Post total knee replacement; Post Open Reduction Internal Fixation (ORIF); Fractures of the femur, tibia, fibula or patella; Ligament reconstructive procedures; Meniscal repairs; Post-fracture management

Description	Length Adjustment	Product #
Universal	29" - 18"	11-450A-00



HCPCS CODE:  
L1845 or L1852

### Functional ACL Knee Brace

- Full-frame brace design provides optimal support and is ideal for high-active or contact sports/use
- Aerospace grade aluminum frame is strong yet customizable
- Posterior calf cuff reduces tibial pressure
- Interchangeable condyle pads for increased comfort, stability, and protection
- Numbered strapping system for intuitive application and removal
- Silicone gripped calf strap liner to help prevent migration
- Optional flexion/extension stops for range of motion control

**Indications:** Mild to moderate ACL, PCL, MCL, LCL; Combined ligament instabilities

Size	6" above Mid-Patella	Mid-Patella	6" below Mid-Patella	Left Contact	Right Contact
Small	14½" - 17"	11½" - 13"	11½" - 13"	11-558A-02	11-559A-02
Medium	17" - 19½"	13" - 15"	13" - 14½"	11-558A-03	11-559A-03
Large	19½" - 22½"	15" - 17"	14½" - 16½"	11-558A-04	11-559A-04
X-Large	22½" - 25½"	17" - 19"	16"½ - 18½"	11-558A-05	11-559A-05
XX-Large	25½" - 30"	19" - 22"	18½" - 22"	11-558A-06	11-559A-06

### OA Single Upright Knee Brace

- Lightweight, low-profile, and easy to use design
- Unique varus/valgus angle adjustment to provide compartmental off-loading and optimize pain relief
- Lateral application avoids tibial crest pressure and medial clearance issues
- Maximizes three points of leverage for medial compartment
- Four SKUs promote inventory reduction and minimal stocking levels
- Interchangeable condyle pads for increased comfort, stability and pain control
- Quick-release buckles for easy donning and doffing
- Silicone gripped liners and strap pads to help prevent migration
- Optional suspension wrap (included) for optimal fixation
- Optional flexion/extension stops for range of motion control



HCPCS CODE:  
L1843 or L1851

**Indications:** Mild to moderate unicompartmental osteoarthritis

Size	Measurement	Left Vargus/Valgus	Right Vargus/Valgus
Standard	< 300 lbs	11-550A-00	11-551A-00
Heavy	> 300 lbs	11-552A-00	11-553A-00

### Warrior® II Knee Brace

- Classic pull-up, wrap-around, and half-wrap designs to optimize individual patient fit and comfort
- Integrated anti-migration strip (pull-up design) for superior fixture and reduced slippage
- Flex-tab feature to prevent hinge discomfort or irritation
- Plaited stretch-nylon material (engineered for swimwear) helps wick away moisture and promote aeration behind the leg and popliteal region
- Waffled spacer fabric promotes breathability for a cooler environment
- Removable condyle pads for increased comfort and stability
- Easy-grip silicone pull tabs for easier donning and doffing
- Two detachable, medial/lateral half-moon shaped buttresses (pull up design) and one detachable, inferior half-moon shaped buttress (half-wrap design) for patellar control
- Optional flexion/extension stops (0° to 100° in 10° increments) for range of motion control
- Optional “hypercontrol” strapping to help prevent hyperextension (regular length designs)



HCPCS CODE:  
L1833 and L2810

**Indications:** Mild to moderate ACL, PCL, MCL, LCL; Combined ligament instabilities; Patellar subluxation

Size	Measurement*	Regular Pull-Up	Short Pull-Up	Regular Wrap-Around	Short Wrap-Around	Regular Half-Wrap
X-Small	13" - 15½"	—	11-444A-01	11-443A-01	11-442A-01	11-447A-01
Small	15½" - 18½"	11-445A-02	11-444A-02	11-443A-02	11-442A-02	11-447A-02
Medium	18½" - 21"	11-445A-03	11-444A-03	11-443A-03	11-442A-03	11-447A-03
Large	21" - 23½"	11-445A-04	11-444A-04	11-443A-04	11-442A-04	11-447A-04
X-Large	23½" - 26½"	11-445A-05	11-444A-05	11-443A-05	11-442A-05	11-447A-05
XX-Large	26½" - 29½"	11-445A-06	11-444A-06	11-443A-06	11-442A-06	11-447A-06
XXX-Large	29½" - 32"	11-445A-07	11-444A-07	11-443A-07	11-442A-07	11-447A-07

\*Measure circumference 6" above mid-patella

# Orthopedics and Bracing

## Knee & Leg



HCPCS CODE: L1820

### Hypercontrol® Knee Brace

- Tri-tex™ construction serves as a breathable alternative to neoprene
- Anatomical design features unique strapping system at the back of the knee to assist in preventing hyperextension
- Medial and lateral hinges help prevent hyperextension of the knee
- Pull-up or wrap-around design available
- Dual adjustable buttresses for maximum patella stabilization (pull-up style only)
- Extension tabs at the thigh and calf accommodate circumferential variances (pull-up style only)
- Superior adjustability for patient comfort
- Condyle pads for additional patient comfort

**Indications:** Grade I or II collateral ligament sprain; Mild ACL/PCL sprain; Grade I varus and valgus instability

Size	Measurement*	Pull-Up	Wrap-Around
X-Small	13½" - 15½"	11-436A-01	—
Small	15½" - 18"	11-436A-02	11-437A-02
Medium	18" - 20½"	11-436A-03	11-437A-03
Large	20½" - 23"	11-436A-04	11-437A-04
X-Large	23" - 25½"	11-436A-05	11-437A-05
XX-Large	25½" - 28"	11-436A-06	11-437A-06
XXX-Large	28" - 30½"	11-436A-07	11-437A-07

\*Measure circumference 6" above mid-patella



HCPCS CODE: L1820

### Deluxe Hinged Knee Support

- ⅛" neoprene construction provides warmth, compression and support
- Medial and lateral hinges with range of motion at 0°, 15°, 30° and 45° to limit extension
- Covered hinges allow brace to be worn during contact sports
- Elastic straps above and below knee help prevent migration
- Superior felt buttress helps control patella
- Condyle pads for additional patient comfort

**Indications:** Grade I or II collateral ligament sprain; Mild ACL/PCL sprain; Grade I varus and valgus instability

Size	Measurement*	Product #
Small	13" - 14"	11-506A-02
Medium	14" - 15"	11-506A-03
Large	15" - 17"	11-506A-04
X-Large	17" - 18"	11-506A-05
XX-Large	18" - 20"	11-506A-06
XXX-Large	20" - 22"	11-506A-07

\*Measure circumference below patella

### Hinged Knee Support

- 1/8" neoprene construction provides warmth, compression and support
- Hinges provide medial and lateral support
- Pull-up or wrap-around design available
- Features open popliteal for breathability
- Condyle pads for additional patient comfort

**Indications:** Grade I or II collateral ligament sprain; Mild ACL/PCL sprain; Grade I varus and valgus instability

Size	Measurement*	Wrap-Around	Pull-Up
X-Small	13½" - 15½"	11-428A-01	11-429A-01
Small	15½" - 18"	11-428A-02	11-429A-02
Medium	18" - 20½"	11-428A-03	11-429A-03
Large	20½" - 23"	11-428A-04	11-429A-04
X-Large	23" - 25½"	11-428A-05	11-429A-05
XX-Large	25½" - 28"	11-428A-06	11-429A-06
XXX-Large	28" - 30½"	—	11-429A-07

\*Measure circumference 6" above mid-patella



HCPCS CODE: L1820

### Knee Brace, Hinged

- Tri-tex™ material construction provides increased ventilation with compression and support
- Double-hinged splint provides medial and lateral support
- Hook and loop straps ensure easy application and adjustable fit
- Low-profile design provides function without bulk
- Condyle pads for additional patient comfort

**Indications:** Medial and lateral collateral ligament injuries, light ACL injuries, arthritis, and osteoarthritis

Size	Measurement*	Product #
X-Small	13½" - 15½"	11-453A-01
Small	15½" - 18"	11-453A-02
Medium	18" - 20½"	11-453A-03
Large	20½" - 23"	11-453A-04
X-Large	23" - 25½"	11-453A-05
XX-Large	25½" - 28"	11-453A-06
XXX-Large	28" - 30½"	11-453A-07

\*Measure circumference 6" above mid-patella



HCPCS CODE: L1820

# Orthopedics and Bracing

## Knee & Leg



HCPCS CODE:

L1820 (Tri-tex™ Only)

### Patella Stabilizer

- 1/8" neoprene construction provides warmth, compression and support
- Also available in breathable Tri-tex™ material
- Full length design for maximum support and compression
- Unique strapping system helps pull patella into desired position
- Horseshoe-shaped pad can be placed on medial or lateral side of patella
- Medial and lateral hinges for additional ligament support (Tri-tex™ only)

**Indications:** Medial or lateral patellar subluxation; Chondromalacia; Patellofemoral tracking dysfunction

Size	Measurement*	Neoprene Right	Neoprene Left	Tri-tex™ Right	Tri-tex™ Left
X-Small	13½" - 15½"	11-439A-01	11-438A-01	11-420A-01	11-421A-01
Small	15½" - 18"	11-439A-02	11-438A-02	11-420A-02	11-421A-02
Medium	18" - 20½"	11-439A-03	11-438A-03	11-420A-03	11-421A-03
Large	20½" - 23"	11-439A-04	11-438A-04	11-420A-04	11-421A-04
X-Large	23" - 25½"	11-439A-05	11-438A-05	11-420A-05	11-421A-05
XX-Large	25½" - 28"	11-439A-06	11-438A-06	11-420A-06	11-421A-06

\*Measure circumference 6" above mid-patella



### Concise Patella Stabilizer

- 1/8" neoprene construction provides warmth, compression and support
- Low-profile design allows for increased range of motion during activity
- Unique strapping system helps pull patella into desired position
- Universal right/left

**Indications:** Medial or lateral patellar subluxation; Chondromalacia; Patellofemoral tracking dysfunction

Size	Measurement*	Product #
X-Small	13½" - 15½"	11-448A-01
Small	15½" - 18"	11-448A-02
Medium	18" - 20½"	11-448A-03
Large	20½" - 23"	11-448A-04
X-Large	23" - 25½"	11-448A-05
XX-Large	25½" - 28"	11-448A-06

\*Measure circumference 6" above mid-patella



### Universal Knee Support

- 1/8" neoprene construction provides warmth, compression and support
- Anterior wrap around strapping above and below knee helps prevent migration
- Universal size reduces inventory needs

**Indications:** Grade I collateral ligament sprain; Patellar subluxation; Chondromalacia; Patellar tendonitis; Patellofemoral tracking dysfunction; Quadriceps tendonitis; Plica syndrome

Size	Measurement*	Product #
Universal	up to 25"	11-435A-00

\*Measure circumference 6" above mid-patella



### Open Patella Knee Support

- 1/8" neoprene construction provides warmth, compression and support
- Available with oval pad for additional patella protection
- Open patella for patient comfort

**Indications:** Grade I collateral ligament sprain; Knee sprains and strains; Osteoarthritis; Mild joint effusion; Baker's cyst; Bursitis; Tendonitis

Size	Measurement*	w/o Pad	w/ Pad
X-Small	13½" - 15½"	11-415A-01	11-416A-01
Small	15½" - 18"	11-415A-02	11-416A-02
Medium	18" - 20½"	11-415A-03	11-416A-03
Large	20½" - 23"	11-415A-04	11-416A-04
X-Large	23" - 25½"	11-415A-05	11-416A-05
XX-Large	25½" - 28"	11-415A-06	11-416A-06
XXX-Large	28" - 30½"	11-415A-07	11-416A-07
XXXX-Large	30½" - 33"	—	11-416A-08

\*Measure circumference 6" above mid-patella





## Patella Band

- Constructed of neoprene for durability
- Unique bi-lateral strapping allows for greater control of buttress tension over patellar tendon
- Pull-up design helps promote compliance and reduce migration
- Low-profile design provides patient comfort

**Indications:** Patellar tendonitis; Osgood-Schlatter's disease; Jumper's knee

Size	Measurement*	Product #
X-Small	11" - 12"	11-417A-01
Small	12" - 13"	11-417A-02
Medium	13" - 14"	11-417A-03
Large	14" - 15"	11-417A-04
X-Large	15" - 16"	11-417A-05
XX-Large	16" - 17"	11-417A-06

\*Measure knee circumference below patella



HCPCS CODE: L1830

## Deluxe Tri-Panel Knee Immobilizer

- Constructed of foam body with durable black foam panels
- T-bar stays provide optimal strength
- Contoured posterior stays for correct anatomical fit
- Adjustable medial and lateral panels allow for universal sizing
- Patella strap assists with application

**Indications:** Mild to severe knee injuries; Post-operative immobilization; Grade II and III collateral ligament sprain; Patellar dislocations; Osteochondral fractures

Length	Product #
12"	11-401A-00
16"	11-403A-00
19"	11-404A-00
22"	11-405A-00
24"	11-406A-00

\*Universal size fits thigh circumference 12" - 24"

### Knee Immobilizer with Elastic Straps

- Perforated foam construction for patient comfort and breathability
- T-bar stays provide optimal strength
- Adjustable medial and lateral stays allow for universal sizing
- Elastic straps provide compression helping to reduce edema

**Indications:** Mild to severe knee injuries; Post-operative immobilization; Grade II and III collateral ligament sprain; Patellar dislocations; Osteochondral fractures

Length	Product #
12"	11-409A-00
16"	11-410A-00
20"	11-411A-00
22"	11-412A-00
24"	11-413A-00
26"	11-414A-00

\*Universal size fits thigh circumference 12" - 24"



HCPCS CODE: L1830

### Bariatric Universal Tri-Panel Knee Immobilizer

- Perforated foam construction for patient comfort and breathability
- T-bar stays provide optimal strength
- Contoured posterior stays for correct anatomical fit
- Adjustable medial and lateral panels allow for universal fit
- Trimmable foam allows for a more customized fit

**Indications:** Mild to severe knee injuries; Post-operative immobilization; Grade II and III collateral ligament sprain; Patellar dislocations; Osteochondral fractures

Length	Product #
19"	11-404A-05

\*Universal size fits thigh circumference 12" - 30"



HCPCS CODE: L1830

### Pediatric Black Foam Knee Immobilizer

- Constructed of black foam with tricot liner
- T-bar stays provide optimal strength
- Contoured posterior stays for correct anatomical fit
- Alternating straps with loop lock closure help provide desired compression

**Indications:** Mild to severe knee injuries; Post-operative immobilization; Grade II and III collateral ligament sprain; Patellar dislocations; Osteochondral fractures

Size	Measurement*	Product #
Pediatric	8" - 10"	11-418A-98

\*Measure thigh circumference 6" above mid-patella



HCPCS CODE: L1830

# Orthopedics and Bracing

## Foot & Ankle



HCPCS CODE: L4350

### Foam Ankle Stirrup

- Open cell polyurethane foam provides a superior fit and has proven to be one of the most conforming and shock absorbing materials on the market
- Rigid medial and lateral shells minimize ankle rotation and inversion/eversion
- Elasticized stretch loop straps provide compression to help reduce edema
- Adjustable outside heel strap for maximum fit and comfort
- Low-profile design fits easily in shoe
- Universal right/left

**Indications:** Acute and chronic ankle sprains; Osteoarthritis; Syndesmosis sprain

Size	Height	Product #
Standard	10"	1-500A-00
Small	8½"	1-500A-02



HCPCS CODE: L4350

### Air Ankle Stirrup

- Rigid medial and lateral shells minimize ankle rotation and inversion/eversion
- Air bladder allows for simple adjustment of air with inflation bulb
- Swivel straps allow even compression when applied in opposite directions
- Adjustable outside heel strap for maximum fit and comfort
- Low-profile design fits easily in shoe
- Universal right/left

**Indications:** Acute and chronic ankle sprains; Osteoarthritis; Syndesmosis sprain

Size	Height	Product #
Standard	10"	1-501A-00
Small	8½"	1-501A-02
Pediatric	6"	1-501A-98



HCPCS CODE: L4350

### Air/Gel Ankle Stirrup

- Rigid medial and lateral shells minimize ankle rotation and inversion/eversion
- Air/gel bladder can be placed in freezer for cold therapy
- Swivel straps allow even compression when applied in opposite directions
- Adjustable outside heel strap for maximum fit and comfort
- Low-profile design fits easily in shoe
- Universal right/left

**Indications:** Acute and chronic ankle sprains; Osteoarthritis; Syndesmosis sprain

Size	Height	Product #
Standard	10"	1-514A-00
Small	8½"	1-514A-01

### Element® Sport Ankle Brace

- Patented heel control strapping system holds the calcaneus under the talus controlling subtalar inversion and talar rotation
- Rigid medial and lateral uprights help prevent abnormal eversion and inversion
- Functional hinge design allows for utilization of the brace prophylactically
- User friendly dynamic closure strap provides circumferential compression for an intimate fit
- Low-profile design helps promote patient compliance
- Low-profile foot plate for a comfortable fit inside of shoes

**Indications:** Chronic ankle instability; Prophylactic talocrural support; Prevention or treatment of acute ankle sprains; Subtalar joint sprain; Syndesmosis sprain



HCPCS CODE: L1902

Size	Male Shoe Size	Female Shoe Size	Right	Left
Small	< 8	< 9½	1-504A-02	1-505A-02
Medium	8- 12	9½- 13½	1-504A-03	1-505A-03
Large	12 +	13½ +	1-504A-04	1-505A-04

### DeRoyal® Sports Orthosis

Powered by the BOA® Fit System

- Powered by the BOA® Fit System for a secure fit
- Dial allows for micro-adjustability and on-the-fly adjustment
- Low-friction lacing allows for even closure and a glove like fit
- Constructed of durable nylon for long lasting wear
- Figure-8 strapping mimics athletic taping
- Low-profile design allows for use in athletic shoe
- No seam under foot
- Universal right/left

**Indications:** Chronic ankle instability; Prophylactic talocrural support; Prevention or treatment of acute ankle sprains; Subtalar joint sprain; Syndesmosis sprain



HCPCS CODE: L1902

Size	Ankle Circumference*	w/o Stays	w/Stays
X-Small	10"-11"	1-510A-01	1-511A-01
Small	11"-12"	1-510A-02	1-511A-02
Medium	12"-13"	1-510A-03	1-511A-03
Large	13"-14"	1-510A-04	1-511A-04
X-Large	14"-15"	1-510A-05	1-511A-05
XX-Large	15"-16"	1-510A-06	1-511A-06

\*Measure circumference from the base of heel around the ankle



HCPCS CODE: L1902

## DeRoyal® Sports Orthosis

- Constructed of durable nylon for long lasting wear
- Figure-8 strapping mimics athletic taping
- Lace-up design for a secure fit
- Elastic cuff closure for added support and compression
- Low-profile design allows use in athletic shoe
- Universal right/left

**Indications:** Chronic ankle instability; Prophylactic talocrural support; Prevention or treatment of acute ankle sprains; Subtalar joint sprain; Syndesmosis sprain

Size	Ankle Circumference*	Product #
X-Small	10" - 11"	1-503A-01
Small	11" - 12"	1-503A-02
Medium	12" - 13"	1-503A-03
Large	13" - 14"	1-503A-04
X-Large	14" - 15"	1-503A-05
XX-Large	15" - 16"	1-503A-06

\*Measure circumference from the base of heel around the ankle



## Figure-8 Wrap Ankle Support

- Constructed of a durable, breathable mesh sock material
- Elastic strap provides compression and edema control
- Figure-8 wrap with hook and loop closure provides additional support
- Universal right/left

**Indications:** Mild ankle sprains and strains; Ankle edema; Peroneal and anterior tibialis tendonitis; Osteoarthritis of the talocrural and subtalar joints

Size	Ankle Circumference*	Product #
Small	7" - 8"	1-526A-01
Medium	8" - 10"	1-526A-02
Large	10" - 12"	1-526A-03
X-Large	12" - 14"	1-526A-04

### Dorsal Night Splint

- Thermoplastic design holds foot in 90° neutral position
- Neoprene straps with hook and loop closure
- Plastic free bottom
- Low-profile design allows for a cooler, more comfortable fit

**Indications:** Plantar fasciitis; Achilles tendonitis; Tendonosis

Size	Male Shoe Size	Female Shoe Size	Product #
Small/Medium	4- 9	5- 10	1-515A-23
Large/X-Large	9½ +	10½ +	1-515A-34



HCPCS CODE: L4397

### DeRoyal® Night Splint

- Dorsiflexion design applies stretch for effective pain relief
- Lightweight and low-profile design for patient comfort
- Adjustable straps to vary amount of stretch
- Removable foam liner for laundering
- Optional foam wedges provided for additional stretch
- Not intended to be worn during ambulation or be weight bearing

**Indications:** Plantar fasciitis; Achilles tendonitis; Tendonosis

Size	Male Shoe Size	Female Shoe Size	Product #
Small	4- 6	5- 7	1-516A-02
Medium	6½- 9	7½ - 10	1-516A-03
Large	9½ +	10½ +	1-516A-04



HCPCS CODE: L4397

### Silicone Heel Cups

- Constructed of medical grade silicone for long-lasting support and comfort
- Soft blue spot helps relieve heel strike fatigue and discomfort through shock absorption
- Packaged 1/Pair

**Indications:** Heel spurs; Bruises; Callosities; Plantar fasciitis and apophyseal injuries; Retrocalcaneal bursitis; Fat pad atrophy

Size	Product #
Small	6-606A-02
Medium	6-606A-03
Large	6-606A-04



HCPCS CODE: L3170

# Orthopedics and Bracing

## Foot & Ankle



HCPCS CODE: L4361

### Full Shell Walker 2

- Built in medial and lateral air pumps allow easy operation and instant air bladder control
- Air bladders accommodate swelling and bulky dressings
- Wide foot bed accommodates varying patient foot anatomies
- Textured tread, non-skid sole provide maximum shock absorption and grip
- Rocker bottom helps promote natural rolling gait
- Unique adjustable toe guard for increased protection
- Additional pads included for extra comfort where needed

**Indications:** Moderate to severe ankle sprains and strains; Stable foot and/or ankle fractures; Syndesmosis sprain; Post ORIF; Achilles tendonitis

Size	Male Shoe Size	Female Shoe Size	Standard	Low-Top
X-Small	up to 4	up to 5	1-524A-01	1-525A-01
Small	4- 7	5- 8	1-524A-02	1-525A-02
Medium	7- 10	8- 11	1-524A-03	1-525A-03
Large	10- 13	11- 15	1-524A-04	1-525A-04
X-Large	13 +	15 +	1-524A-05	1-525A-05



HCPCS CODE: L4361

### Inline Pneumatic Walker 2

- High quality rigid outer skeleton for superior protection
- Dense foam liner to provide comfort and support
- Shock absorbing embedded sole tread improves patient comfort and helps prevent slips
- Rocker bottom promotes natural rolling gait
- Plastic uprights help reduce ankle rotation and range of motion.
- Large air bladder creates a larger surface for contact pressure to help control swelling and ensure a snug, comfortable fit

**Indications:** Moderate to severe ankle sprains and strains; Stable foot and/or ankle fractures; Syndesmosis sprain; Post ORIF; Achilles tendonitis

Size	Male Shoe Size	Female Shoe Size	Standard	Low-Top
X-Small	up to 4½	up to 5½	1-522A-01	1-523A-01
Small	4½- 7½	5½- 8	1-522A-02	1-523A-02
Medium	7½- 10½	8- 11½	1-522A-03	1-523A-03
Large	10½- 12½	11½- 13½	1-522A-04	1-523A-04
X-Large	12½ +	13 +	1-522A-05	1-523A-05



### Ironside Metal Upright Air Walker

- Inflatable air pump design for compression and stabilization
- Metal uprights provide maximum stability
- Rocker bottom promotes natural rolling gait
- Wide foot plate for patient comfort and stability
- Closed heel design helps prevent heel migration

**Indications:** Moderate to severe ankle sprains and strains; Stable foot and/or ankle fractures; Syndesmosis sprain; Post ORIF, Achilles tendonitis

Size	Male Shoe Size	Female Shoe Size	Product #
X-Small	up to 4½	up to 6	1-531A-01
Small	4½- 7	6- 8	1-531A-02
Medium	7½- 10	8½- 11	1-531A-03
Large	10- 12½	11½- 13½	1-531A-04
X-Large	12½ +	13½ +	1-531A-05



HCPCS CODE: L4361

### Pacesetter™ Air Walker

- Inflatable pump design for compression and stabilization
- Unique non-welded air bladder reduces chance of over-inflation to the point of bursting or tearing
- Wide foot plate for patient comfort and stability
- Rocker bottom helps promote natural rolling gait
- Heel strap helps prevent foot migration
- Offered in both standard and low top versions

**Indications:** Moderate to severe ankle sprains and strains; Stable foot and/or ankle fractures; Syndesmosis sprain; Post ORIF; Achilles tendonitis

Male Size	Female Shoe Size	Shoe Size	Standard	Low-Top
Small	3- 6½	4- 7½	1-502A-02	1-502A-12
Medium	7- 8½	8- 10	1-502A-03	1-502A-13
Large	9- 10½	10½- 12½	1-502A-04	1-502A-14
X-Large	11- 16	13 +	1-502A-05	1-502A-15
Youth	1- 3 (Child)		1-502A-97	—



HCPCS CODE: L4361

# Orthopedics and Bracing

## Foot & Ankle



HCPCS CODE: L4361

### Pediatric Air Walker Boot

- Durable metal uprights offer sturdy support
- Built-in pneumatic system provides the patient with a customized fit
- Lightweight design for optimal comfort
- Rocker bottom mimics natural gait

**Indications:** Moderate to severe ankle sprains and strains, Stable foot and/or ankle fractures, Syndesmosis sprain, Post ORIF, Achilles tendonitis

Size	Shoe Size	Product #
Small	Child 6½ to 9½	1-528A-98
Medium	Child 10 to Youth 1	1-529A-98
Large	Youth 1½ to 2½	1-530A-98



HCPCS CODE: L4387

### Pacesetter™ II Walker

- Rocker bottom promotes natural rolling gait
- Double laminated foam wrap is breathable to prevent skin breakdown
- Wide foot plate for patient comfort and stability
- Available in open or closed heel design
- Open heel offered in both standard and low top versions

**Indications:** Moderate to severe ankle sprains and strains; Stable foot and/or ankle fractures; Syndesmosis sprain; Post ORIF; Achilles tendonitis

Size	Male Shoe Size	Female Shoe Size	Standard Open Heel	Standard Closed Heel	Low Top Open Heel
Small	3- 6½	4- 7½	1-506A-02	1-513A-02	1-507A-02
Medium	7- 8½	8- 10	1-506A-03	1-513A-03	1-507A-03
Large	9- 10½	10½- 12½	1-506A-04	1-513A-04	1-507A-04
X-Large	11- 16	13 +	1-506A-05	1-513A-05	1-507A-05



HCPCS CODE: L4387

### Tracker EX Walker

- Lightweight design for patient comfort
- Low-profile rocker bottom sole promotes natural rolling gait
- Wide foot plate for patient comfort and stability
- Closed heel design helps prevent heel migration
- Extra long wrap provides full coverage

**Indications:** Moderate to severe ankle sprains and strains; Stable foot and/or ankle fractures; Syndesmosis sprain; Post ORIF; Achilles tendonitis

Size	Male Shoe Size	Female Shoe Size	Product #
Small	6- 8½	5- 8½	1-512A-02
Medium	9- 10½	9- 11½	1-512A-03
Large	11- 13	12- 13½	1-512A-04
X-Large	13½ +	14 +	1-512A-05

### Grid Iron XR® Walker

- Features rigid metal uprights for maximum stability
- Low-profile rocker bottom sole helps promote natural gait
- Wide foot plate for patient comfort and stability
- Closed heel design helps prevent heel migration

**Indications:** Moderate to severe ankle sprains and strains; Stable foot and/or ankle fractures; Syndesmosis sprain; Post ORIF; Achilles tendonitis



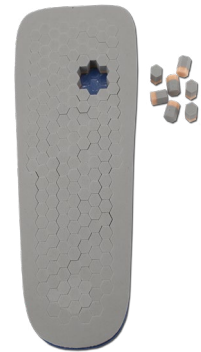
HCPCS CODE: L4387

Size	Male Shoe Size	Female Shoe Size	Product #
X-Small	up to 3½	up to 4½	1-518A-01
Small	4- 7	5- 8½	1-518A-02
Medium	7½- 10	9- 11	1-518A-03
Large	10½- 12	11½- 13	1-518A-04
X-Large	12½ +	13½ +	1-518A-05

### Darco® PegAssist™ PW Insole

- Removable EVA plantar pegs provide localized wound and ulceration offloading
- Stabilizer board protects pegs with hook strip to attach to walker
- Each insole contains a 15mm combination Plastazote® and Multi-Foam base and a 3mm PORON® Cushioning cover.
- Fits most standard walker boots

**Indications:** Post-surgery or when wounds are present on the foot



HCPCS CODE: A9283

Size	Male Shoe Size	Female Shoe Size	Product #
X-Small	—	3½- 6	1-532A-01
Small	5- 7½	6½- 9	1-532A-02
Medium	8- 10½	9½- 12	1-532A-03
Large	11- 13	12+	1-532A-04
X-Large	13½+	—	1-532A-05



### Darco® Slimline Cast Boot

- Square toe design serves as a bumper for protection and provides room for larger casts
- Stretchable upper material helps boot conform to cast allowing precise fit
- Rocker bottom promotes natural rolling gait
- Padded insole to cushion patient's foot
- Strapless forefoot closure adjusts easily to cast size

**Indications:** Lower extremity cast protection

Size	Male Shoe Size	Female Shoe Size	Product #
X-Small	—	3- 5	6-614A-01
Small	—	5½- 8	6-614A-02
Medium	6- 8	8½- 10	6-614A-03
Large	8½- 11	10½- 13	6-614A-04
X-Large	11½- 14	13 +	6-614A-05

Size	Child Shoe Size	Product #
Small	8- 10½	6-614A-98
Medium	11- 1½	6-614A-99
Large	2- 4	6-614A-00



### Comfo-EZE™ Rocker Cast Shoe

- Constructed of durable navy canvas material
- Non-slip rubber sole for patient safety
- Rocker bottom promotes natural rolling gait
- Heel strap helps prevent foot migration
- Hook and loop closure for easy application

**Indications:** Lower extremity cast protection

Size	Length	Width	Product #
Pediatric	5½"	2½"	6-602A-98
X-Small	7"	3½"	6-602A-01
Small	8½"	4½"	6-602A-02
Medium	10"	4¾"	6-602A-03
Large	11½"	5¼"	6-602A-04
X-Large	13"	5½"	6-602A-05

### Post-Op Shoe

- Semi-rigid rubber sole for support
- Black nylon upper for comfort
- Loop lock closure for easy application
- Universal right/left

**Indications:** Post-operative foot protection and support; Minor foot fractures

Size	Male Shoe Size	Product #	Female Shoe Size	Product #
Small	6 - 8	6-600A-02	4- 6	6-601A-02
Medium	8½ - 10	6-600A-03	6½- 8	6-601A-03
Large	10½ - 12	6-600A-04	8½- 10	6-601A-04
X-Large	12½ - 14	6-600A-05	—	—



HCPCS CODE: L3260

### Rigid Post-Op Shoe

- Rigid rubber sole for support
- Reinforced padded heel counter to help reduce slippage
- Padded upper for patient comfort
- Loop lock closure for easy application
- Universal right/left

**Indications:** Post-operative foot protection and support; Minor foot fractures

Size	Male Shoe Size	Product #	Female Shoe Size	Product #
Small	6- 8	6-612A-02	4- 6	6-613A-02
Medium	8½ - 10	6-612A-03	6½- 8	6-613A-03
Large	10½- 12	6-612A-04	8½- 10	6-613A-04
X-Large	12½- 14	6-612A-05	—	—



HCPCS CODE: L3260

### Aegis Post-Op Shoe

- Semi-rigid rubber sole for support
- Reinforced padded heel counter to help reduce slippage
- Padded upper for patient comfort
- Loop lock closure for easy application
- Universal right/left

**Indications:** Post-operative foot protection and support; Minor foot fractures

Size	Male Shoe Size	Product #	Female Shoe Size	Product #
Small	6- 8	6-610A-02	4- 6	6-611A-02
Medium	8½ - 10	6-610A-03	6½- 8	6-611A-03
Large	10½- 12	6-610A-04	8½- 10	6-611A-04
X-Large	12½- 14	6-610A-05	—	—



HCPCS CODE: L3260

# Orthopedics and Bracing

## Foot & Ankle



HCPCS CODE: L3260

### Pediatric Wooden Post-Op Shoe

- Rigid wood sole with rubber bottom for support
- Perforated suede upper for comfort and durability
- Hook and loop closure design
- Universal right/left

**Indications:** Post-operative foot protection and support; Minor foot fractures

Size	Male Shoe Size	Product #	Female Shoe Size	Product #
Child	2- 4½	6-607A-98	2- 3½	6-608A-98



HCPCS CODE: L3260

### Darco® Orthowedge™ Shoe

- Reduces weight bearing pressure from the forefoot with 15° dorsi-angle
- Removable 10 mm insole allows customization for off-loading specific areas
- Square toe design serves as a bumper for additional protection
- Hook and loop closure for easy application
- Universal right/left

**Indications:** Post-operative foot protection and support; Minor foot fractures

Size	Male Shoe Size	Female Shoe Size	Product #
X-Small	—	4- 7	6-615A-01
Small	6- 8	7½- 10	6-615A-02
Medium	8½- 10	10½- 13	6-615A-03
Large	10½- 12	13½ +	6-615A-04
X-Large	12½- 14	—	6-615A-05



HCPCS CODE: L3260

### Darco® MedSurg™ Shoe

- MetaShank™ protection provides rigid control under metatarsal heads
- Strapless forefoot closure expands to accommodate bulky dressings
- Square toe design serves as a bumper for additional protection
- Rocker sole reduces plantar pressure on forefoot and heel
- Ankle strap helps eliminate heel migration
- Universal right/left

**Indications:** Post-operative foot protection and support; Minor foot fractures

Size	Male Shoe Size	Product #	Female Shoe Size	Product #
Small	6- 8	6-604A-02	4- 6	6-603A-02
Medium	8½- 10	6-604A-03	6½- 8	6-603A-03
Large	10½- 12	6-604A-04	8½- 10	6-603A-04
X-Large	12½- 14	6-604A-05	—	—

### JetStream™ Hot/Cold Therapy Unit

- Patented Automatic Temperature Control (ATC™) measures and regulates temperature to provide therapeutic hot or cold therapy without manual adjustment
- Intuitive LED light lets user know when the unit is in therapeutic zone and adjust when to add ice or hot water
- Portable system suitable for any medical setting or treatment at home
- Lightweight, low-profile design and Quick Start Guide are patient friendly
- Unit provides cold or hot therapy
- Therapy blankets optimize temperature distribution, insulation and comfort
- Blanket wraps increase insulation and ensure precise placement of blankets
- Knee/Shoulder combo unit comes with 3 detached straps (2 x 24" and 1 x 36") and can be used with either the knee or shoulder



HCPCS CODE:  
E0217 or E0218

**Indications:** Cold Therapy: Reduce pain or soft tissue swelling after trauma or surgery;  
Hot Therapy: Loosen or relax tight or sore muscles and/or joint stiffness prior to rehabilitation or exercise

#### Description

JetStream™ Combo Non-Sterile Knee/Shoulder

#### Product #

13-700A-00

#### Contraindications - WHEN NOT TO USE HOT THERAPY

**DO NOT** use hot therapy on patients with any of the following contraindications:

- History of heat injury or adverse reactions to hot therapy
- Incoherent due to sedation, anesthesia, coma or sleep
- Decreased skin sensitivity or localized circulation or wound healing problems
- Arteriosclerosis or atherosclerosis
- Abdomen of women who are pregnant
- Localized malignancy in treatment area
- Hypersensitivity to heat
- Local tissue infection, swelling or inflammation

#### Contraindications - WHEN NOT TO USE COLD THERAPY

**DO NOT** use cold therapy on patients with any of the following contraindications:

- History of cold injury, frostbite or adverse reactions to cold therapy
- Incoherent due to sedation, anesthesia, coma or sleep
- Decreased skin sensitivity or localized circulation or wound healing problems, including those caused by multiple surgical procedures
- Circulatory syndromes due to Raynaud's disease, Buerger's disease, peripheral vascular disease, vasopastic disorders, or hypercoagulable clotting disorders
- Hand/wrist or foot/ankle surgery exhibiting polyneuropathy
- Hypersensitivity to cold
- Children 12 and under
- Local tissue infection
- Diabetes

**If you have any of the above contraindications, ask your healthcare provider for alternate treatments.**

# Orthopedics and Bracing

## Temperature Therapy



HCPCS CODE: E0218

### CoolJet® Cold Therapy Unit

- Automatic Temperature Control (ATC™) measures and regulates temperature to provide therapeutic cold therapy without manual adjustment
- Intuitive LED light lets user know when the unit is in therapeutic zone and when to add ice
- Portable system suitable for any medical setting or treatment at home
- Therapy blankets optimize temperature distribution, insulation and comfort
- Blanket wraps increase insulation and ensure precise placement of blankets
- Intuitive screw top opening

**Indications:** Cold Therapy: Reduce pain or soft tissue swelling after trauma or surgery

#### Description

CoolJet® Combo Non-Sterile Hip/Lumbar  
CoolJet® Combo Non-Sterile Knee (w/attached straps) 13-800A-00

#### Product #

13-809A-00

#### Contraindications - WHEN NOT TO USE COLD THERAPY

**DO NOT** use cold therapy on patients with any of the following contraindications:

- History of cold injury, frostbite or adverse reactions to cold therapy
- Incoherent due to sedation, anesthesia, coma or sleep
- Decreased skin sensitivity or localized circulation or wound healing problems, including those caused by multiple surgical procedures
- Circulatory syndromes due to Raynaud's disease, Buerger's disease, peripheral vascular disease, vasopastic disorders, or hypercoagulable clotting disorders
- Hand/wrist or foot/ankle surgery exhibiting polyneuropathy
- Hypersensitivity to cold
- Children 12 and under
- Local tissue infection
- Diabetes

**If you have any of the above contraindications, ask your healthcare provider for alternate treatments.**

### ActiveWrap Thermal Supports



- Constructed of comfortable Active Medical Plush™ material for best ergonomic fit
- Gel packs provide long lasting hot or cold therapy
- Gel packs do not migrate or push away under pressure providing effective uniform therapy
- Packs can be removed and uniquely positioned within wraps to provide more targeted treatment and improved compression
- Dual layer pouch allows user to control and temper cold/hot therapy by an average of 5° F
- Can be used without thermal packs for compression, support and warmth

**Indications:** Pain and soft tissue swelling as a result of surgery or trauma

#### BACK

Size	Waist Circumference	Packs (7" x 10")	Product #
Small/Medium	< 35"	1 Cold/Hot	13-810A-23
Large/X-Large	35" - 54"	1 Cold/Hot	13-810A-45



## Humeral Fracture Bracing

- Orthopedic grade thermoplastic construction
- Prefabricated and anatomically designed for best fit
- Durable, lightweight, adjustable and easy to remove for proper hygiene
- Allows for movement of muscles surrounding fracture site
- Hook and loop closures help maintain soft tissue compression

**Indications:** Treatment and management of diaphyseal fractures; Post surgical immobilization



HCPCS CODE:

13-806A-Series L3980

13-801A-Series - L3995

Size	Distal Circumference	Proximal Circumference	Regular	Extended
Small	7" - 9"	9" - 11"	13-801A-02	13-806A-02
Medium	9" - 11"	11" - 13"	13-801A-03	13-806A-03
Large	11" - 13"	13" - 15"	13-801A-04	13-806A-04
X-Large	13" - 15"	15" - 17"	13-801A-05	13-806A-05

## Padded Heel & Elbow Protectors

- Knitted sleeve conforms around heel or elbow to help hold product in place
- Breathable foam pad sewn into cushioned sleeve for maximum pressure protection with no irritating seam

**Indications:** Pressure injury prevention; Skin shearing and/or skin friction



Size	Qty	Product #
Universal	12 Pair/Case	16-1300A-00

# Orthopedics and Bracing

## Miscellaneous



### Edema Gloves

- Soft, comfortable compression gloves to help reduce swelling
- Color: Champagne

#### 3/4" Finger - Over Wrist

Size	Measurement*	Right	Left
X-Small	7"	13-802A-01	13-803A-01
Small	8"	13-802A-02	13-803A-02
Medium	9"	13-802A-03	13-803A-03
Large	10"	13-802A-04	13-803A-04

#### Full Finger - Over Wrist

Size	Measurement*	Right	Left
X-Small	7"	13-804A-01	13-805A-01
Medium	9"	13-804A-03	13-805A-03
Large	10"	13-804A-04	13-805A-04

\* Measure hand circumference around knuckles with palm flat




### BioStim® TENS Electrotherapy

- Helps reduce pain, enhances activity, and encourages return to work
- Has no known side effects, no risk of overdosing, and no drug interference
- Is cost efficient, usually reimbursed, and easy to use
- Helps patients remain attentive, functional, and productive
- Puts patients in control of their pain

**BioStim®**  
TENS Electrotherapy Kit

**Product #**  
13-812A-00

 **WARNING**- This product can expose you to chemicals including Diisononyl phthalate and lead which are known to the state of California to cause cancer and birth defects or other reproductive hard. For more information go to [www.P65Warnings.ca.gov](http://www.P65Warnings.ca.gov).

## Crutches

- Lightweight, sturdy aluminum construction
- Push-button height adjustment
- Rubber tips for maximum surface traction
- Padded underarm rest and hand grips for patient comfort
- Packaged as one pair
- Not made with natural rubber latex

Size	Height	Product #
Pediatric	4' - 4'6"	3-700A-98
Short	4'8" - 5'2"	3-700A-01
Regular	5'2" - 5'10"	3-700A-02
Tall	5'10" - 6'6"	3-700A-03
Universal	4'6" - 6'6"	3-703A-00



HCPCS CODE: E0100NU

## Folding Walkers

- Lightweight, sturdy aluminum construction
- Push-button height adjustment
- Push-button folding for easy storage and transport
- Rubber tips for maximum surface traction
- Padded hand grips for patient comfort
- 5" wheels option
- Two gliders for a smooth glide on most surfaces
- Packaged as one each

Type	Product #
Standard	3-701A-00
Wheeled	3-702A-00



HCPCS CODE:  
w/ Wheels: E0135NU

## Walking Canes

- Lightweight, sturdy aluminum construction
- Push-button height adjustable from 30" - 40"
- Rubber tip for maximum surface traction
- Padded hand grip for patient comfort
- Packaged as one each

Size	Product #
Universal	3-700A-00



HCPCS CODE: E0114NU

# Negative Pressure Wound Therapy

## NPWT Device

### Prospera® PRO-II™ NPWT System

The Prospera® PRO-II™ system combines powerful negative pressure therapy with hassle-free portability and clinical ease of use. Near silent operation, large, easy-to-read, color-coded display screens, and a long battery life helps increase comfort and satisfaction for patients. Offering both VPT® (Variable Pressure Technology) and Continuous settings, the Prospera® PRO-II™ is designed to provide personalized therapy treatment that can be used for a wide variety of wound etiologies.

### Prospera® PRO-II™ Negative Pressure Wound Therapy Device<sup>1-5</sup>

- Promotes wound healing by removal of wound exudate, debris, and infectious materials
- Promotes more effective blood flow to wound site
- Controls the zone of hypo-perfusion surrounding the wound edge eliminating concern for ischemia
- Increases proliferation of new granulation tissue
- Gradual pressure cycling (in 5 mmHg increments)
- Lower than traditional pressures provides gentle tissue massage resulting in less pain and better outcomes



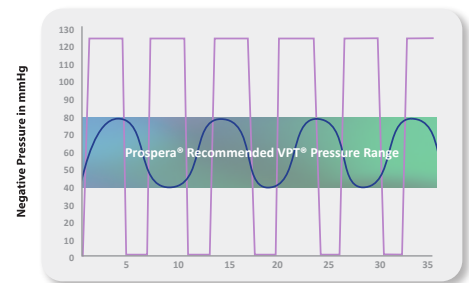
Product #	Description	Case Qty	HCPCS
NP-2000	PRO-II® Unit	1	E2402
NP-2000GPS	PRO-II® Unit w/GPS	1	E2402

### Benefits of VPT® Technology

Intermittent negative pressure increases blood to the wound site more effectively than continuous negative pressure, and proliferation of new granulation tissue is significantly higher.<sup>1,2</sup> Prospera NPWT devices with VPT technology deliver comfortable, variable pressure therapy.

- Customizable time and pressure settings.
- Calibrated to increase and decrease in comfortable increments
- Limits painful high and low pressure spikes.<sup>2,3,4</sup>

#### Variable Pressure Therapy (VPT®)\*



\* Data on file  
 — Intermittent pressure levels of other brands  
 — VPT pressure ranges of the Prospera® NPWT device



### Prospera® PRO-II™ Canisters

NPWT Canisters are available with and without solidifier

Product #	Size	Solidifier	Case Qty
NP-0250	250cc	YES	10/Ca
NP-0250N	250cc	NO	10/Ca
NP-0450	450cc	YES	10/Ca
NP-0450N	450cc	NO	10/Ca

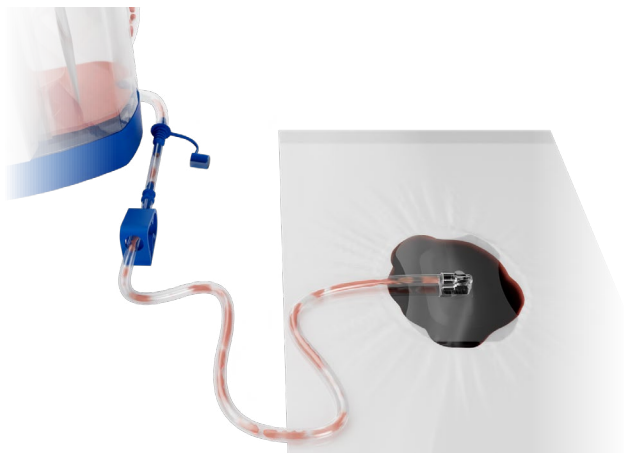
## Prospera<sup>®</sup> PRO NPWT Dressing Kits

**Kits:** DeRoyal<sup>®</sup> NPWT kits come in a wide variety of sizes and options with each containing a filler, dome connector, and film dressing. Our complete dressing kits also each include a measuring tool.

**Black Foam:** DeRoyal's black foam is a hydrophobic open-pore reticulated foam designed to promote wound healing by removing excess exudate and infection debris, and supports wound contracture when used in combination with NPWT therapy units.

**White Foam:** DeRoyal's white foam is an open-cell polyvinyl hydrophilic foam that can be used to protect delicate structures or be applied to undermining and tunneling in a wound when using NPWT therapy.

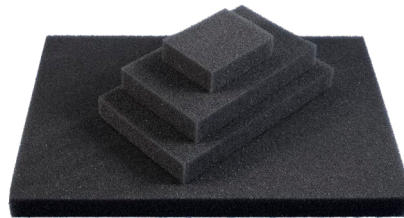
**AMD Gauze:** DeRoyal's antimicrobial gauze is hydrophilic and designed to absorb and retain fluid. It is effective for treatment of wounds with low to moderate drainage.



- Supports efficient fluid management and accurate negative pressure delivery across all therapeutic pressure ranges
- Technology compatible with existing DeRoyal<sup>®</sup> negative pressure devices
- Technology performance supports wound dressing seal variability
- Hydrophobic Filter filters external air, limits particulate contamination into the dressing site, and protects from external fluid (e.g. showering)



**Transeal<sup>®</sup>  
MAXX or TR Drape**



**Black Foam**



**White  
Foam**



**Antimicrobial  
(AMD) Gauze**



**Prospera Propel<sup>™</sup>  
P Dome**

# Negative Pressure Wound Therapy

## NPWT Kits

### Prospera® PRO NPWT Kits



### Black Foam Kits w/Transeal® TR Drape

All kits contain 1 Prospera Propel™ P Dome and 1 Ruler in addition to the items listed below.

Kit #	Contents	Case Qty
NP-6001P <i>(small)</i>	1 Transeal® Triple Release drape 8" x 12" 1 black foam square (10cm x 8cm x 3cm)	10/Ca
NP-6002P <i>(medium)</i>	2 Transeal® Triple Release drapes 8" x 12" 1 black foam square (20cm x 12.5cm x 3cm)	10/Ca
NP-6003P <i>(large)</i>	3 Transeal® Triple Release drapes 8" x 12" 1 black foam square (25cm x 15cm x 3cm)	10/Ca
NP-0503P <i>(x-large)</i>	4 Transeal® Triple Release drapes 8" x 12" 1 black foam square (45cm x 30cm x 3cm)	10/Ca



### Black Foam Kits w/Transeal® MAXX Drape

All kits contain 1 Prospera Propel™ P Dome and 1 Ruler in addition to the items listed below.

Kit #	Contents	Case Qty
NP-6006P <i>(small)</i>	1 Transeal® MAXX drape 8" x 12" 1 black foam square (10cm x 8cm x 3cm)	10/Ca
NP-6007P <i>(medium)</i>	2 Transeal® MAXX drapes 8" x 12" 1 black foam square (20cm x 12.5cm x 3cm)	10/Ca
NP-6008P <i>(large)</i>	3 Transeal® MAXX drapes 8" x 12" 1 black foam square (25cm x 15cm x 3cm)	10/Ca



### Thin Pre-cut Black Foam Kits with Transeal® TR Drape

All kits contain 1 Prospera Propel™ P Dome and 1 Ruler in addition to the items listed below.

Kit #	Contents	Case Qty
NP-6011P <i>(small)</i>	1 Transeal® Triple Release drape 8" x 12" 1 thin helix cut black foam (10cm x 8cm x 1.5cm)	10/Ca
NP-6012P <i>(medium)</i>	2 Transeal® Triple Release drapes 8" x 12" 1 thin helix cut black foam (20cm x 12.5cm x 1.5cm)	10/Ca
NP-6013P <i>(large)</i>	3 Transeal® Triple Release drapes 8" x 12" 1 thin helix cut black foam (25cm x 15cm x 1.5cm)	10/Ca

### Thin Pre-cut Black Foam Kits w/Transeal® MAXX Drape

All kits contain 1 Prospera Propel™ P Dome and 1 Ruler in addition to the items listed below.

Kit #	Contents	Case Qty
NP-6014P <i>(small)</i>	1 Transeal® MAXX drape 8" x 12" 1 thin helix cut black foam (10cm x 8cm x 1.5cm)	10/Ca
NP-6015P <i>(medium)</i>	2 Transeal® MAXX drapes 8" x 12" 1 thin helix cut black foam (20cm x 12.5cm x 1.5cm)	10/Ca
NP-6016P <i>(large)</i>	3 Transeal® MAXX drapes 8" x 12" 1 thin helix cut black foam (25cm x 15cm x 1.5cm)	10/Ca



### Black Foam Kits w/Transeal® TR Drape & Dermanet® Ag+ Dressing

**CONTAINS SILVER**

All kits contain 1 Prospera Propel™ P Dome and 1 Ruler in addition to the items listed below.

Kit #	Contents	Case Qty
NP-0505P <i>(small)</i>	1 Transeal® Triple Release drape 8" x 12" 1 Dermanet® AG+ 4" x 4" dressing 1 black foam square (10cm x 8cm x 3cm)	10/Ca
NP-0506P <i>(medium)</i>	2 Transeal® Triple Release drapes 8" x 12" 1 Dermanet® AG+ 8" x 8" dressing 1 black foam square (20cm x 12.5cm x 3cm)	10/Ca
NP-0507P <i>(large)</i>	3 Transeal® Triple Release drapes 8" x 12" 1 Dermanet® AG+ 8" x 18" dressing 1 black foam square (25cm x 15cm x 3cm)	10/Ca



# Negative Pressure Wound Therapy

## NPWT Kits

### Prospera® PRO NPWT Kits / Specialty Dressings

#### Anti-microbial Gauze Kits w/ Transeal® TR Drape

All kits contain 1 Prospera Propel™ P Dome and 1 Ruler in addition to the items listed below.

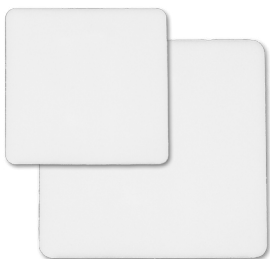
Kit #	Contents	Case Qty
NP-0013P (small)	1 Transeal® Triple Release drape 8" x 12" 1 AMD Gauze Sponge (2/pk) 1 Saline (30ml)	10/Ca
NP-0014P (medium)	2 Transeal® Triple Release drape 8" x 12" 2 AMD Gauze Sponge (2/pk) 1 Saline (30ml)	10/Ca
NP-0015P (large)	3 Transeal® Triple Release drape 8" x 12" 1 Sponge Kerlix® AMD Roll 2 Saline (30ml/ea)	10/Ca



#### White Foam

Kit contains high tensile strength white foam

Product #	Size	Case Qty
NP-906B	Medium (3.5" x 3.5")	50/Ca
NP-907B	Large (6" x 6")	50/Ca
NP-908B	X-Large (11" x 14")	50/Ca



#### Bridge Kit

All kits contain 1 Prospera Propel™ P Dome in addition to the items listed below.

Product #	Contents	Case Qty
NP-300P	2 Black Foam Strips 3 Transeal® Triple Release drapes 8" x 12" 1 Thin helix cut black foam (20cm x 12.5cm x 1.5cm) 1 Y Connector	5/Ca





## Prospera® Dressing Components / Accessories



### Prospera Propel™ Dome Connector

Product #	Description	Case Qty
NP-190P	Standard	10/Ca



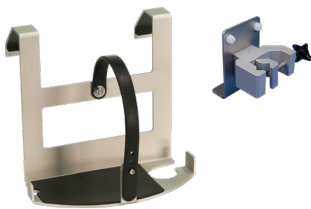
### Transeal® TR / MAXX Film Dressings

Product #	Size	Case Qty
46-326B	8" x 12" Transeal® TR Dressing	100/Ca
46-302TR	Transeal® TR Dressing Patch	100/Ca
46-326X	8" x 12" Transeal® MAXX Dressing	100/Ca
46-302M	Transeal® MAXX Dressing Patch	100/Ca



### Universal Y-Connector

Product #	Description	Case Qty
NP-120-10	Universal Y-Connector	10
NP-120	Universal Y-Connector	100
32-2071	Sterile	-



### Bed Rack / IV Pole Attachments

Product #	Description	Case Qty
NP-170	Bed Rack	1
NP-150	IV Pole	1
NP-170IV	Bed Rack w/IV Pole	1



### Carrier Bags

Product #	Description	Case Qty
NP-2001L	PRO-II® Large Bag	1



### AC Power Adapter

Product #	Description	Case Qty
NP-2002	PRO-II® AC Power Adapter	1

## Trademarks

Active Medical Plush® is a trademark of ActiveWrap, Inc.  
The ActiveWrap logo is a registered trademark of ActiveWrap, Inc.  
Continuum AIR™ is a trademark of DeRoyal Industries, Inc.  
ATC™ is a trademark of DeRoyal Industries, Inc.  
BioStim is a registered trademark of MedServ Group Inc.  
BOA® is a registered trademark of Boa Technology Inc.  
Capital™ is a trademark of DeRoyal Industries, Inc.  
Comfo-EZE™ is a trademark of DeRoyal Industries, Inc.  
Comfort Cool® is a registered trademark of DeRoyal Industries, Inc.  
The Continuum® logo is a registered trademark of DeRoyal Industries, Inc.  
Continuum® is a registered trademark of DeRoyal Industries, Inc.  
CoolJet® is a registered trademark of DeRoyal Industries, Inc.  
Darco® is a registered trademark of Darco International, Inc.  
DeRoyal® is a registered trademark of DeRoyal Industries, Inc.  
The DeRoyal logo is a registered trademark of DeRoyal Industries, Inc.  
Eclipse is a registered trademark of Vision Quest Industries, Inc. d/b/a VQ OrthoCare Corp  
Element® is a registered trademark of DeRoyal Industries, Inc.  
Grid IronXR® is a registered trademark of DeRoyal Industries, Inc.  
HeelWedge™ is a trademark of Darco International, Inc.  
Hypercontrol® is a registered trademark of DeRoyal Industries, Inc.  
Ironsides® is a registered trademark of DeRoyal Industries, Inc.  
JetStream™ is a trademark of DeRoyal Industries, Inc.  
The JetStream logo is a registered trademark of DeRoyal Industries, Inc.  
LMB™ is a trademark of DeRoyal Industries, Inc.  
Lycra is a registered trademark of Invista North America S.A.R.L. Corp.  
MAXAlign® is a registered trademark of DeRoyal Industries, Inc.  
MedSurg™ is a trademark of Darco International, Inc.  
Metashank™ is a trademark of Darco International, Inc.  
Pacesetter™ is a trademark of DeRoyal Industries, Inc.  
PegAssist™ is a trademark of Darco Industries, Inc.  
Pick it. Use it. Throw it away.® is a registered trademark of DeRoyal Industries, Inc.  
Plastazote® is a registered trademark of Zotefoams PLC  
PORON® is a registered trademark of DeRoyal Industries, Inc.  
Prolign® is a registered trademark of DeRoyal Industries, Inc.  
OrthoWedge™ is a trademark of Darco International, Inc.  
OSCAR® is a registered trademark of DeRoyal Industries, Inc.  
Rep Band® is a registered trademark of DeRoyal Industries, Inc.  
Solace® is a registered trademark of DeRoyal Industries, Inc.  
Thera-Band® is a registered trademark of DeRoyal Industries, Inc.  
Tri-Tex is a trademark of DeRoyal Industries, Inc.  
Ultralign® is a registered trademark of DeRoyal Industries, Inc.  
Warrior® is a registered trademark of DeRoyal Industries, Inc.  
Wire-Foam™ is a trademark of DeRoyal Industries, Inc.  
DermaNet® is a registered trademark of DeRoyal Industries, Inc.  
Prospera® is a registered trademark of DeRoyal Industries, Inc.  
Prospera Propel™ is a trademark of DeRoyal Industries, Inc.  
PRO-II® is a registered trademark of DeRoyal Industries, Inc.  
Transeal is a registered trademark of DeRoyal Industries, Inc.  
VPT is a registered trademark of DeRoyal Industries, Inc.

## Cited References

### References (Page 11,13, and 15)

1. 0-2584 Continuum® Adena Case Study White Paper
2. 0-2519 Continuum® Peachtree White Paper
3. 0-2417 Continuum® NPWT- In Practice Savings and Solutions
4. 0-2498 Continuum® Injection Training White Paper
5. 0-2468 Continuum® NPWT Study at Level 1 Trauma Center
6. Sue Willey, James Lenk, Linda Waters, Charles Joseph French, III, Jonathan Mathew Cayce, Impact of the physical therapy–managed spinal orthoses program on cost of care in the hospital setting: a retrospective interrupted time-series study, *International Journal for Quality in Health Care*, Volume 34, Issue 4, 2022, mzac094, <https://doi.org/10.1093/intqhc/mzac094>

### References (Page 78)

1. Morykwas MJ, Argenta LC, Shelton-Brown EI, McGuirt W. Vacuum-Assisted Closure: A new method for wound control and treatment: Animal studies and basic foundation. *Annals of Plastic Surgery* 1997;38:553-562.
2. Borquist, O., Ingemansson, R., Malmjö, M., The Influence of Low and High Pressure Levels during Negative Pressure Wound Therapy on Wound Contraction and Fluid Evacuation. *Plastic and Reconstructive Surgery*, February 2011; 127:2: 551-559
3. Eberlein T, Fendler H, Ahearn C. Using a new technique for negative pressure wound therapy (NPWT) for the management of chronic, non-healing wounds. SAWC 2008, San Diego
4. Eberlein T, Fendler H. Using a new technique of negative pressure wound therapy (NPWT), Variable Pressure Therapy (VPT) for the management of chronic, non-healing wounds. *JWOCN* May/June 2009;36(35):S23
5. Malmjö, M., Gustafsson, L., Lindstedt, S., Gesslein, B., & Ingemansson, R. (2012). The Effects of Variable, Intermittent, and Continuous Negative Pressure Wound Therapy, Using Foam or Gauze, on Wound Contraction, Granulation Tissue Formation, and Ingrowth Into the Wound Filler. *Eplasty*, 12, e5.